

Supplemental material is neither peer-reviewed nor thoroughly edited by CJASN. The authors alone are responsible for the accuracy and presentation of the material.

Supplemental Table of Contents

Supplemental Table 1 includes information on selection of the study cohort.

Supplemental Table 2 includes unadjusted rates of specific complications for patients with and without end-stage kidney disease.

Supplemental Table 3 includes raw data for procedure utilization.

Supplemental Table 4 includes specific codes for bariatric surgery and our exclusion criteria diagram.

Supplemental Table 5 includes risk-adjusted outcome rates over time for patients with ESKD.

Supplemental Table 6 includes all complication codes for ICD-9 and ICD-10 specifications.

Supplemental material is neither peer-reviewed nor thoroughly edited by CJASN. The authors alone are responsible for the accuracy and presentation of the material.

Supplemental Table 1: Note: All patients with a diagnosis of stomach cancer are excluded.

ICD-9	ICD-10	Operation
4382	0DB64Z3	Sleeve gastrectomy
4389	0DB60Z3	Sleeve gastrectomy
4389	0DB60ZZ	Sleeve gastrectomy
4389	0DB63Z3	Sleeve gastrectomy
4389	0DB63ZZ	Sleeve gastrectomy
4389	0DB67Z3	Sleeve gastrectomy
4389	0DB67ZZ	Sleeve gastrectomy
4389	0DB68Z3	Sleeve gastrectomy
4431	0D160ZA	Roux-en-y gastric bypass
4431	0D168ZA	Roux-en-y gastric bypass
4438	0D16479	Roux-en-y gastric bypass
4438	0D1647A	Roux-en-y gastric bypass
4438	0D1647B	Roux-en-y gastric bypass
4438	0D1647L	Roux-en-y gastric bypass
4438	0D164J9	Roux-en-y gastric bypass
4438	0D164JA	Roux-en-y gastric bypass
4438	0D164JB	Roux-en-y gastric bypass
4438	0D164JL	Roux-en-y gastric bypass
4438	0D164K9	Roux-en-y gastric bypass
4438	0D164KA	Roux-en-y gastric bypass
4438	0D164KB	Roux-en-y gastric bypass
4438	0D164KL	Roux-en-y gastric bypass
4438	0D164Z9	Roux-en-y gastric bypass
4438	0D164ZA	Roux-en-y gastric bypass
4438	0D164ZB	Roux-en-y gastric bypass
4438	0D164ZL	Roux-en-y gastric bypass
4439	0D16079	Roux-en-y gastric bypass
4439	0D1607A	Roux-en-y gastric bypass
4439	0D1607B	Roux-en-y gastric bypass
4439	0D1607L	Roux-en-y gastric bypass
4439	0D160J9	Roux-en-y gastric bypass
4439	0D160JA	Roux-en-y gastric bypass
4439	0D160JB	Roux-en-y gastric bypass
4439	0D160JL	Roux-en-y gastric bypass
4439	0D160K9	Roux-en-y gastric bypass
4439	0D160KA	Roux-en-y gastric bypass
4439	0D160KB	Roux-en-y gastric bypass
4439	0D160KL	Roux-en-y gastric bypass

Supplemental material is neither peer-reviewed nor thoroughly edited by CJASN. The authors alone are responsible for the accuracy and presentation of the material.

4439	0D160Z9	Roux-en-y gastric bypass
4439	0D160ZA	Roux-en-y gastric bypass
4439	0D160ZB	Roux-en-y gastric bypass
4439	0D160ZL	Roux-en-y gastric bypass
4439	0D16879	Roux-en-y gastric bypass
4439	0D1687A	Roux-en-y gastric bypass
4439	0D1687B	Roux-en-y gastric bypass
4439	0D1687L	Roux-en-y gastric bypass
4439	0D168J9	Roux-en-y gastric bypass
4439	0D168JA	Roux-en-y gastric bypass
4439	0D168JB	Roux-en-y gastric bypass
4439	0D168JL	Roux-en-y gastric bypass
4439	0D168K9	Roux-en-y gastric bypass
4439	0D168KA	Roux-en-y gastric bypass
4439	0D168KB	Roux-en-y gastric bypass
4439	0D168KL	Roux-en-y gastric bypass
4439	0D168Z9	Roux-en-y gastric bypass
4439	0D168ZA	Roux-en-y gastric bypass
4439	0D168ZB	Roux-en-y gastric bypass
4439	0D168ZL	Roux-en-y gastric bypass
445	0DQ60ZZ	Roux-en-y gastric bypass
445	0DQ63ZZ	Roux-en-y gastric bypass
445	0DQ64ZZ	Roux-en-y gastric bypass
445	0DQ67ZZ	Roux-en-y gastric bypass
4468	0DQ64ZZ	Duodenal switch
4468	0DV64CZ	Duodenal switch
4495	0DV64CZ	Gastric banding
4496	0DW643Z	Gastric banding
4496	0DW64CZ	Gastric banding
4499	0DH60DZ	Gastric banding
4499	0DH63DZ	Gastric banding
4499	0DH64DZ	Gastric banding
4499	0DH67DZ	Gastric banding
4499	0DH68DZ	Gastric banding
4499	0DL60CZ	Gastric banding
4499	0DL60DZ	Gastric banding
4499	0DL60ZZ	Gastric banding
4499	0DL63CZ	Gastric banding
4499	0DL63DZ	Gastric banding
4499	0DL63ZZ	Gastric banding
4499	0DL64CZ	Gastric banding

Supplemental material is neither peer-reviewed nor thoroughly edited by CJASN. The authors alone are responsible for the accuracy and presentation of the material.

4499	ODL64DZ	Gastric banding
4499	ODL64ZZ	Gastric banding
4499	ODL67DZ	Gastric banding
4499	ODL67ZZ	Gastric banding
4499	ODL68DZ	Gastric banding
4499	ODL70CZ	Gastric banding
4499	ODL70DZ	Gastric banding
4499	ODL70ZZ	Gastric banding
4499	ODL73CZ	Gastric banding
4499	ODL73DZ	Gastric banding
4499	ODL73ZZ	Gastric banding
4499	ODL74CZ	Gastric banding
4499	ODL74DZ	Gastric banding
4499	ODL74ZZ	Gastric banding
4499	ODL77DZ	Gastric banding
4499	ODL77ZZ	Gastric banding
4499	ODL78DZ	Gastric banding

Supplemental material is neither peer-reviewed nor thoroughly edited by CJASN. The authors alone are responsible for the accuracy and presentation of the material.

Supplemental Table 2: Unadjusted complication rates per 100 patients.

Complication	Unadjusted Rates N (%)	
	Patients without End-Stage Renal Disease	Patients with End-Stage Renal Disease
Pneumonia	446 (0.22)	8 (0.30)
Myocardial infarction	256 (0.13)	12 (0.44)
DVT/PE	1,549 (0.77)	25 (0.93)
Postoperative gastrointestinal bleeding	257 (0.13)	2 (0.07)
Surgical site infection	769 (0.38)	16 (0.59)
Sepsis	557 (0.28)	15 (0.56)
Cardiac arrest	422 (0.21)	15 (0.56)

Supplemental material is neither peer-reviewed nor thoroughly edited by CJASN. The authors alone are responsible for the accuracy and presentation of the material.

Supplemental Table 3: Crude rates of bariatric surgery for patients with and without end-stage kidney disease over time.

Patients with ESKD			
Year	Number of Cases	Total Patient Population	Crude Rate (%)
Sleeve			
2006	0	50	0.0
2007	0	97	0.0
2008	1	128	0.8
2009	4	183	2.2
2010	7	190	3.7
2011	8	218	3.7
2012	26	202	12.9
2013	207	301	68.8
2014	322	424	75.9
2015	345	430	80.2
2016	398	475	83.8
RYGB			
2006	29	50	58.0
2007	46	97	47.4
2008	56	128	43.8
2009	90	183	49.2
2010	102	190	53.7
2011	130	218	59.6
2012	139	202	68.8
2013	81	301	26.9
2014	91	424	21.5
2015	73	430	17.0
2016	64	475	13.5
Band			
2006	10	50	20.0
2007	38	97	39.2
2008	56	128	43.8
2009	83	183	45.4
2010	72	190	37.9
2011	71	218	32.6
2012	31	202	15.3
2013	7	301	2.3
2014	5	424	1.2

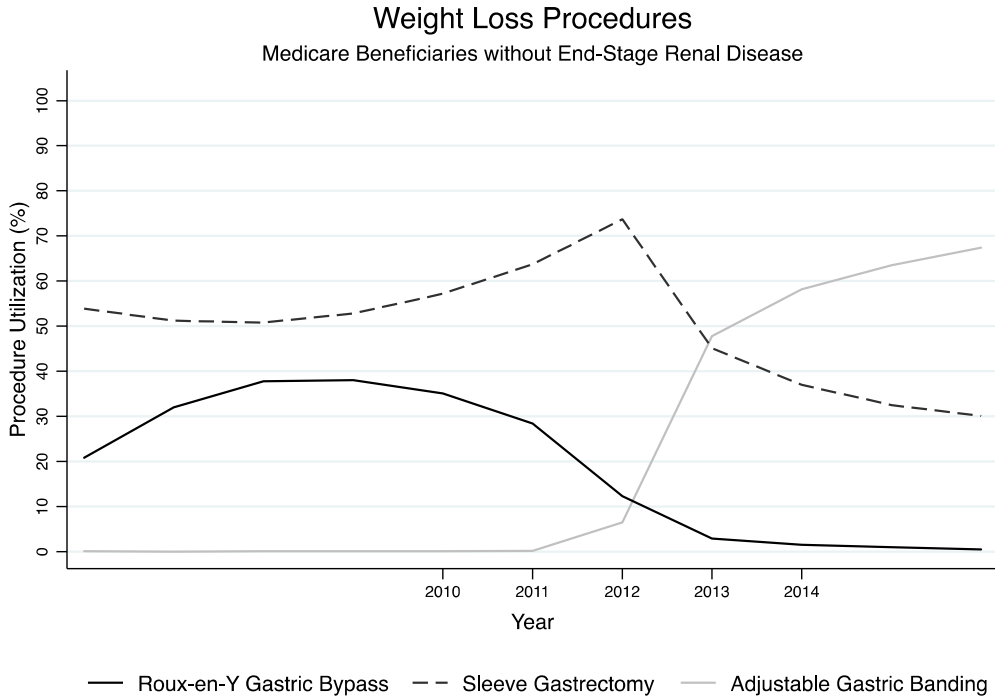
Supplemental material is neither peer-reviewed nor thoroughly edited by CJASN. The authors alone are responsible for the accuracy and presentation of the material.

2015	5	430	1.2
2016	1	475	0.2

Patients without ESKD			
Year	Number of Cases	Total Patient Population	Crude Rate (%)
Sleeve			
2006	4	7,804	0.1
2007	5	10,456	0.0
2008	8	14,980	0.1
2009	10	17,414	0.1
2010	21	17,788	0.1
2011	39	17,673	0.2
2012	1,064	16,443	6.5
2013	10,566	22,101	47.8
2014	14,340	24,660	58.2
2015	16,472	25,931	63.5
2016	17,415	25,854	67.4
RYGB			
2006	4,206	7,804	53.9
2007	5,355	10,456	51.2
2008	7,615	14,980	50.8
2009	9,195	17,414	52.8
2010	10,170	17,788	57.2
2011	11,252	17,673	63.7
2012	12,119	16,443	73.7
2013	9,958	22,101	45.1
2014	9,114	24,660	37.0
2015	8,418	25,931	32.5
2016	7,770	25,854	30.1
Band			
2006	1,627	7,804	20.8
2007	3,349	10,456	32.0
2008	5,662	14,980	37.8
2009	6,610	17,414	38.0
2010	6,239	17,788	35.1
2011	5,025	17,673	28.4
2012	2,026	16,443	12.3
2013	638	22,101	2.9

Supplemental material is neither peer-reviewed nor thoroughly edited by CJASN. The authors alone are responsible for the accuracy and presentation of the material.

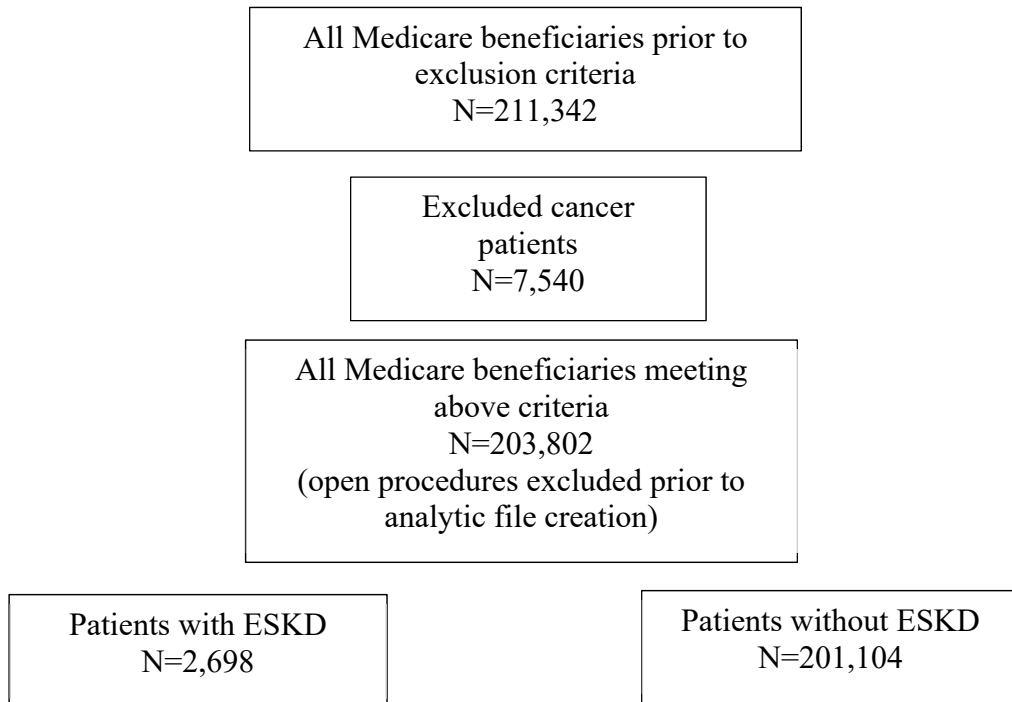
2014	368	24,660	1.5
2015	270	25,931	1.0
2016	128	25,854	0.5



Supplemental Table 4: Cohort specifications (discrete codes for each bariatric procedure listed above in 1.1)

Bariatric surgery	Any bariatric surgery (SX: 443, 4431, 4438, 4439, 4389, 4468, 4495, 4496, 4499, 445,4382) & diagnosis of morbid obesity (DX: 2780, 27801, and 27800, V778) & DRG 619, 620, 621 for weight loss surgery.	Exclude stomach or intestine cancers (DX: 1500 to 1599 and 2301 to 2309).	Sleeve gastrectomy (SX: 4389); Gastric banding (SX: 4495); Laparoscopic gastric bypass (SX: 4438); Conversion to open (DX: V64.41).
--------------------------	---------------------------------------------------------------------------------------------------------------------------------------------------------------------------------------------------------	---------------------------------------------------------------------------	-------------------------------------------------------------------------------------------------------------------------------------

Medicare includes a special designating variable for patients with end-stage kidney disease. This information was corroborated with ICD-9 (58.56) or ICD-10 (N18.6) diagnosis codes from the primary claims file to identify all patients with end-stage kidney disease. We further verified the status of a prior kidney transplant and current dialysis status. Prior transplants were identified by ICD-9 (V42.0) and ICD-10 (Z94.0) codes. Patients were considered to be on dialysis if they had ESKD as well as ICD-9 (V45.11) and ICD-10 (Z99.2) codes for dialysis status.



Supplemental Table 5: Outcomes over time for patients with end-stage kidney disease

Table. Risk-adjusted postoperative outcomes over time for patients with end-stage kidney disease

Outcome	Time Period			p-value
	2006-2008	2009-2013	2014-2016	
Postoperative complications, %	N=32,577	N=92,223	N=76,879	
Laparoscopic sleeve gastrectomy	3.4	3.4	3.5	0.23
95% CI	(2.2, 4.5)	(2.0, 4.8)	(2.7, 4.2)	
Laparoscopic Roux-en-Y gastric bypass	7.1	6.8	6.7	0.09
95% CI	(4.6, 9.2)	(5.0, 8.1)	(6.0, 7.4)	
Laparoscopic gastric banding	2.5	2.2	2.4	0.44
95% CI	(1.0, 4.1)	(1.5, 3.0)	(2.0, 2.8)	
Length of stay, days				
Laparoscopic sleeve gastrectomy	2.8	2.3	2.2	0.07
95% CI	(2.6, 3.0)	(2.0, 2.6)	(2.0, 2.4)	
Laparoscopic Roux-en-Y gastric bypass	3.6	3.7	3.2	0.13
95% CI	(3.2, 4.0)	(3.5, 3.9)	(3.0, 3.4)	
Laparoscopic gastric banding	1.5	1.6	1.4	0.62
95% CI	(1.4, 1.7)	(1.3, 1.9)	(1.2, 1.6)	
Readmission, %				
Laparoscopic sleeve gastrectomy	8.7	9.5	8.4	0.15
95% CI	(7.3, 10.1)	(8.5, 10.5)	(7.8, 9.0)	
Laparoscopic Roux-en-Y gastric bypass	14.5	16.3	15.4	0.2
95% CI	(14.4, 18.4)	(15.0, 17.5)	(14.7, 16.1)	
Laparoscopic gastric banding	8.6	8.5	9.0	0.38
95% CI	(5.2, 11.0)	(7.2, 9.3)	(8.4, 9.6)	

P-value reflect the coefficient on the time period covariate in the Poisson model.

Supplemental Table 6: ICD-9 and 10 Codes for complications.

ICD10cm_code	ICD9cm_code	Short_description
I2109	41000	STEMI involving oth coronary artery of anterior wall
I2109	41001	STEMI involving oth coronary artery of anterior wall
I220	41001	Subsequent STEMI of anterior wall
I2109	41002	STEMI involving oth coronary artery of anterior wall
I2109	41010	STEMI involving oth coronary artery of anterior wall
I2101	41011	STEMI involving left main coronary artery
I2102	41011	STEMI involving left anterior descending coronary artery
I2109	41011	STEMI involving oth coronary artery of anterior wall
I220	41011	Subsequent STEMI of anterior wall
I2109	41012	STEMI involving oth coronary artery of anterior wall
I2119	41020	STEMI involving oth coronary artery of inferior wall
I2119	41021	STEMI involving oth coronary artery of inferior wall
I221	41021	Subsequent STEMI of inferior wall
I2119	41022	STEMI involving oth coronary artery of inferior wall
I2111	41030	STEMI involving right coronary artery
I2111	41031	STEMI involving right coronary artery
I221	41031	Subsequent STEMI of inferior wall
I2111	41032	STEMI involving right coronary artery
I2119	41040	STEMI involving oth coronary artery of inferior wall
I2119	41041	STEMI involving oth coronary artery of inferior wall
I221	41041	Subsequent STEMI of inferior wall
I2119	41042	STEMI involving oth coronary artery of inferior wall
I2129	41050	STEMI involving oth sites
I2129	41051	STEMI involving oth sites
I228	41051	Subsequent STEMI of sites
I2129	41052	STEMI involving oth sites
I2129	41060	STEMI involving oth sites
I2129	41061	STEMI involving oth sites
I228	41061	Subsequent STEMI of sites
I2129	41062	STEMI involving oth sites
I214	41070	Non-ST elevation (NSTEMI) myocardial infarction
I214	41071	Non-ST elevation (NSTEMI) myocardial infarction
I222	41071	Subsequent non-ST elevation (NSTEMI) myocardial infarction
I214	41072	Non-ST elevation (NSTEMI) myocardial infarction
I2129	41080	STEMI involving oth sites
I2121	41081	STEMI involving left circumflex coronary artery
I2129	41081	STEMI involving oth sites
I228	41081	Subsequent STEMI of sites
I2129	41082	STEMI involving oth sites
I213	41090	ST elevation (STEMI) myocardial infarction of unsp site

Supplemental material is neither peer-reviewed nor thoroughly edited by CJASN. The authors alone are responsible for the accuracy and presentation of the material.

I213	41091	ST elevation (STEMI) myocardial infarction of unsp site
I229	41091	Subsequent STEMI of unsp site
I2699	41511	Other pulmonary embolism without acute cor pulmonale
I2602	41513	Saddle embolus of pulmonary artery with acute cor pulmonale
I2692	41513	Saddle embolus of pulmonary artery w/o acute cor pulmonale
I2609	41519	Other pulmonary embolism with acute cor pulmonale
I2699	41519	Other pulmonary embolism without acute cor pulmonale
I8010	45111	Phlebitis and thrombophlebitis of unspecified femoral vein
I8011	45111	Phlebitis and thrombophlebitis of right femoral vein
I8012	45111	Phlebitis and thrombophlebitis of left femoral vein
I8013	45111	Phlebitis and thrombophlebitis of femoral vein, bilateral
I80201	45119	Phlbt and thombophlb of unsp deep vessels of r low extrem
I80202	45119	Phlbt and thombophlb of unsp deep vessels of l low extrem
I80203	45119	Phlbt and thombophlb of unsp deep vessels of low extrm, bi
I80209	45119	Phlbt and thombophlb of unsp deep vessels of unsp low extrm
I80221	45119	Phlebitis and thrombophlebitis of right popliteal vein
I80222	45119	Phlebitis and thrombophlebitis of left popliteal vein
I80223	45119	Phlebitis and thrombophlebitis of popliteal vein, bilateral
I80229	45119	Phlebitis and thrombophlebitis of unspecified popliteal vein
I80231	45119	Phlebitis and thrombophlebitis of right tibial vein
I80232	45119	Phlebitis and thrombophlebitis of left tibial vein
I80233	45119	Phlebitis and thrombophlebitis of tibial vein, bilateral
I80239	45119	Phlebitis and thrombophlebitis of unspecified tibial vein
I80291	45119	Phlebitis and thombophlb of deep vessels of r low extrem
I80292	45119	Phlebitis and thombophlb of deep vessels of l low extrem
I80293	45119	Phlebitis and thombophlb of deep vessels of low extrm, bi
I80299	45119	Phlebitis and thombophlb of deep vessels of unsp low extrm
I803	4512	Phlebitis and thrombophlebitis of lower extremities, unsp
I80211	45181	Phlebitis and thrombophlebitis of right iliac vein
I80212	45181	Phlebitis and thrombophlebitis of left iliac vein
I80213	45181	Phlebitis and thrombophlebitis of iliac vein, bilateral
I80219	45181	Phlebitis and thrombophlebitis of unspecified iliac vein
I82621	45382	Acute embolism and thrombosis of deep veins of r up extrem
I82622	45382	Acute embolism and thrombosis of deep veins of l up extrem
I82623	45382	Acute embolism and thombos of deep veins of up extrem, bi
I82629	45382	Acute embolism and thrombosis of deep vn unsp up extrem
I82601	45383	Acute embolism and thombos unsp veins of r up extrem
I82602	45383	Acute embolism and thombos unsp veins of l up extrem
I82603	45383	Acute embolism and thombos unsp veins of up extrem, bi
I82609	45383	Acute embolism and thombos unsp vn unsp upper extremity

Supplemental material is neither peer-reviewed nor thoroughly edited by CJASN. The authors alone are responsible for the accuracy and presentation of the material.

I82A11	45384	Acute embolism and thrombosis of right axillary vein
I82A12	45384	Acute embolism and thrombosis of left axillary vein
I82A13	45384	Acute embolism and thrombosis of axillary vein, bilateral
I82A19	45384	Acute embolism and thrombosis of unspecified axillary vein
I82B11	45385	Acute embolism and thrombosis of right subclavian vein
I82B12	45385	Acute embolism and thrombosis of left subclavian vein
I82B13	45385	Acute embolism and thrombosis of subclavian vein, bilateral Acute embolism and thrombosis of unspecified subclavian vein
I82B19	45385	Acute embolism and thrombosis of right internal jugular vein
I82C11	45386	Acute embolism and thrombosis of left internal jugular vein
I82C12	45386	Acute embolism and thrombosis of int jugular vein, bilateral
I82C13	45386	Acute embolism and thrombosis of unsp internal jugular vein
I82C19	45386	Acute embolism and thrombosis of other thoracic veins
I82210	45387	Acute embolism and thrombosis of other specified veins
I82290	45387	Acute embolism and thrombosis of unspecified vein
I82890	45389	Acute kidney failure with tubular necrosis
I8290	45389	Acute kidney failure with acute cortical necrosis
N170	5845	Acute kidney failure with medullary necrosis
N171	5846	Other acute kidney failure
N172	5847	Acute kidney failure, unspecified
N178	5848	Oth complications of surgical and medical care, NEC, init
N179	5849	Postp hematoma of a nervous sys org fol a nervous sys proc
T888XXA	99813	Postproc hematoma of a circ sys org fol other circ sys proc
G9761	99812	Postproc hematoma of a circ sys org fol other procedure
I97638	99812	Postproc hematoma of a circ sys org following a cardiac cath
I97621	99812	Postproc hematoma of a circ sys org following cardiac bypass
I97630	99812	Postproc hematoma of a dgstv sys org fol a dgstv sys proc
I97631	99812	Postproc hematoma of a dgstv sys org fol other procedure
K91870	99812	Postproc hematoma of a GU sys org fol a GU sys procedure
K91871	99812	Postproc hematoma of a GU sys org following other procedure
N99840	99812	Postproc hematoma of a ms structure fol a ms sys procedure
N99841	99812	Postproc hematoma of a ms structure fol other procedure
M96840	99812	Postproc hematoma of a nervous sys org fol other procedure
M96841	99812	Postproc hematoma of a resp sys org fol a resp sys procedure
G9762	99812	Postproc hematoma of a resp sys org fol other procedure
J95860	99812	Postproc hematoma of an endo sys org fol an endo sys proc
J95861	99812	Postproc hematoma of an endo sys org fol other procedure
E89820	99812	Postproc hematoma of ear/mastd following other procedure
E89821	99812	Postproc hematoma of eye and adnexa fol an ophth proc, bi
H9552	99812	
H59333	99812	

Supplemental material is neither peer-reviewed nor thoroughly edited by CJASN. The authors alone are responsible for the accuracy and presentation of the material.

H59343	99812	Postproc hematoma of eye and adnexa fol other procedure, bi
H59332	99812	Postproc hematoma of left eye and adnexa fol an opth proc
H59342	99812	Postproc hematoma of left eye and adnexa fol other procedure
H59331	99812	Postproc hematoma of right eye and adnexa fol an opth proc
H59341	99812	Postproc hematoma of right eye and adnexa fol other proc
L7631	99812	Postproc hematoma of skin, subcu fol a dermatologic proc
L7632	99812	Postproc hematoma of skin, subcu following other procedure
D7832	99812	Postproc hematoma of the spleen following other procedure
H59339	99812	Postproc hematoma of unsp and adnexa fol an opth procedure
H59349	99812	Postproc hematoma of unsp and adnexa fol other procedure
I97618	99811	Postproc hemor of a circ sys org fol other circ sys proc
I97610	99811	Postproc hemor of a circ sys org following a cardiac cath
I97611	99811	Postproc hemor of a circ sys org following cardiac bypass
I97620	99811	Postproc hemor of a circ sys org following other procedure
K91840	99811	Postproc hemor of a dgstv sys org fol a dgstv sys procedure
K91841	99811	Postproc hemor of a dgstv sys org following other procedure
N99820	99811	Postproc hemor of a GU sys org following a GU sys procedure
N99821	99811	Postproc hemor of a GU sys org following other procedure
M96830	99811	Postproc hemor of a ms structure fol a ms sys procedure
M96831	99811	Postproc hemor of a ms structure following other procedure
G9751	99811	Postproc hemor of a nervous sys org fol a nervous sys proc
G9752	99811	Postproc hemor of a nervous sys org fol other procedure
J95830	99811	Postproc hemor of a resp sys org fol a resp sys procedure
J95831	99811	Postproc hemor of a resp sys org following other procedure
E89810	99811	Postproc hemor of an endo sys org fol an endo sys procedure
E89811	99811	Postproc hemor of an endo sys org following other procedure
H59313	99811	Postproc hemor of eye and adnexa fol an opth procedure, bi
H59323	99811	Postproc hemor of eye and adnexa fol other procedure, bi
H59312	99811	Postproc hemor of left eye and adnexa fol an opth procedure
H59322	99811	Postproc hemor of left eye and adnexa fol other procedure
H59311	99811	Postproc hemor of right eye and adnexa fol an opth procedure
H59321	99811	Postproc hemor of right eye and adnexa fol other procedure
L7621	99811	Postproc hemor of skin, subcu fol a dermatologic procedure
H59319	99811	Postproc hemor of unsp and adnexa fol an opth procedure
H59329	99811	Postproc hemor of unsp and adnexa following other procedure
H9542	99811	Postproc hemorrhage of ear/mastd following other procedure
L7622	99811	Postproc hemorrhage of skin, subcu following other procedure

Supplemental material is neither peer-reviewed nor thoroughly edited by CJASN. The authors alone are responsible for the accuracy and presentation of the material.

D7822	99811	Postproc hemorrhage of the spleen following other procedure
H9551	99812	Postprocedural hematoma of ear/mastd fol proc on ear/mastd
D7831	99812	Postprocedural hematoma of the spleen fol proc on spleen
H9541	99811	Postprocedural hemorrhage of ear/mastd fol proc on ear/mastd
D7821	99811	Postprocedural hemorrhage of the spleen fol proc on spleen
T798XXA	9583	Other early complications of trauma, initial encounter
T8130XA	99830	Disruption of wound, unspecified, initial encounter
T8132XA	99831	Disruption of internal operation (surgical) wound, NEC, init
T8131XA	99832	Disruption of external operation (surgical) wound, NEC, init
T8133XA	99833	Disruption of traumatic injury wound repair, init encntr
T814XXA	99851	Infection following a procedure, initial encounter
K6811	99859	Postprocedural retroperitoneal abscess
T814XXA	99859	Infection following a procedure, initial encounter
K260	53200	Acute duodenal ulcer with hemorrhage
K262	53220	Acute duodenal ulcer with both hemorrhage and perforation
K262	53221	Acute duodenal ulcer with both hemorrhage and perforation
K270	53300	Acute peptic ulcer, site unspecified, with hemorrhage
K270	53301	Acute peptic ulcer, site unspecified, with hemorrhage
K271	53310	Acute peptic ulcer, site unspecified, with perforation
K271	53311	Acute peptic ulcer, site unspecified, with perforation
K272	53320	Acute peptic ulcer, site unsp, w both hemorrhage and perf
K272	53321	Acute peptic ulcer, site unsp, w both hemorrhage and perf
K280	53400	Acute gastrojejunal ulcer with hemorrhage
K280	53401	Acute gastrojejunal ulcer with hemorrhage
K281	53410	Acute gastrojejunal ulcer with perforation
K281	53411	Acute gastrojejunal ulcer with perforation
K282	53420	Acute gastrojejunal ulcer w both hemorrhage and perforation
K282	53421	Acute gastrojejunal ulcer w both hemorrhage and perforation
K2901	53501	Acute gastritis with bleeding
K2951	53511	Unspecified chronic gastritis with bleeding
K2961	53521	Other gastritis with bleeding
K2921	53531	Alcoholic gastritis with bleeding
K2961	53541	Other gastritis with bleeding
K2971	53551	Gastritis, unspecified, with bleeding
K2991	53551	Gastroduodenitis, unspecified, with bleeding
K2981	53561	Duodenitis with bleeding
K922	5789	Gastrointestinal hemorrhage, unspecified
J9600	51881	Acute respiratory failure, unsp w hypoxia or hypercapnia
J9601	51881	Acute respiratory failure with hypoxia
J9602	51881	Acute respiratory failure with hypercapnia

Supplemental material is neither peer-reviewed nor thoroughly edited by CJASN. The authors alone are responsible for the accuracy and presentation of the material.

J9690	51881	Respiratory failure, unsp, unsp w hypoxia or hypercapnia
J9691	51881	Respiratory failure, unspecified with hypoxia
J9692	51881	Respiratory failure, unspecified with hypercapnia
J80	51882	Acute respiratory distress syndrome
J9620	51884	Acute and chr resp failure, unsp w hypoxia or hypercapnia
J9621	51884	Acute and chronic respiratory failure with hypoxia
J9622	51884	Acute and chronic respiratory failure with hypercapnia
J13	481	Pneumonia due to Streptococcus pneumoniae
J181	481	Lobar pneumonia, unspecified organism
J150	4820	Pneumonia due to Klebsiella pneumoniae
J151	4821	Pneumonia due to Pseudomonas
J14	4822	Pneumonia due to Hemophilus influenzae
J154	48230	Pneumonia due to other streptococci
J154	48231	Pneumonia due to other streptococci
J153	48232	Pneumonia due to streptococcus, group B
J154	48239	Pneumonia due to other streptococci
J1520	48240	Pneumonia due to staphylococcus, unspecified
J15211	48241	Pneumonia due to methicillin suscep staph Pneumonia due to Methicillin resistant Staphylococcus
J15212	48242	aureus
J1529	48249	Pneumonia due to other staphylococcus
J158	48281	Pneumonia due to other specified bacteria
J155	48282	Pneumonia due to Escherichia coli
J156	48283	Pneumonia due to other aerobic Gram-negative bacteria
A481	48284	Legionnaires' disease
J158	48289	Pneumonia due to other specified bacteria
J159	4829	Unspecified bacterial pneumonia
J157	4830	Pneumonia due to Mycoplasma pneumoniae
J160	4831	Chlamydial pneumonia
J168	4838	Pneumonia due to other specified infectious organisms
B250	4841	Cytomegaloviral pneumonitis
A221	4845	Pulmonary anthrax
B440	4846	Invasive pulmonary aspergillosis
J17	4847	Pneumonia in diseases classified elsewhere
B7781	4848	Ascariasis pneumonia
J17	4848	Pneumonia in diseases classified elsewhere
J180	485	Bronchopneumonia, unspecified organism
J690	5070	Pneumonitis due to inhalation of food and vomit