

Supplementary tables and figures

Supplementary Table 1. Univariable logistic regressions assessing whether characteristics of complete peripheral depletion associate with complete response at week 78 including urinary sediment in the definition of complete response.

	N (%) with complete response	Unadjusted Odds Ratio (95% CI)	P value
Complete peripheral depletion		4.9 (1.02, 24)	0.04
Achieved (n=53)	23 (43%)		
Not achieved (n=15)	2 (13%)		
Duration of complete peripheral depletion		3.2 (1.1, 9.1)	0.02
≥ 71 days (n=34)	17 (50%)		
< 71 days (n=34)	8 (24%)		
Each incremental delay of 30 days to complete peripheral depletion	25 (37%)	0.90 (0.82, 0.98)	0.02

CI, confidence interval.

Supplementary Table 2A. Univariable logistic regressions assessing peripheral depletion CD19 < 5 cells/μL and its associations with complete response at week 78.

	N (%) with complete response	Unadjusted Odds Ratio (95% CI)	P value
Achievement of peripheral depletion		1	-
Achieved (n=68)	27 (40%)		
Not achieved (n=0)	0 (0%)		
Duration of peripheral depletion		1.4 (0.54, 3.8)	0.4
≥ 301 days (n=34)	15 (44%)		
< 301 days (n=34)	12 (35%)		
Every incremental delay of 30 days to depletion	27 (40%)	0.99 (0.68, 1.4)	0.9

Supplementary Table 2B. Univariable logistic regressions assessing peripheral depletion CD19 < 20 cells/μL and its associations with complete response at week 78.

	N (%) with complete response	Unadjusted Odds Ratio (95% CI)	P value
--	------------------------------	--------------------------------	---------

Achievement peripheral depletion		1	-
Achieved (n=68)	27 (40%)		
Not achieved (n=0)	0 (0%)		
Duration of peripheral depletion		1.4 (0.54, 3.8)	0.4
≥ 394 days (n=34)	15 (44%)		
< 394 days (n=34)	12 (35%)		
Every incremental delay of 30 days to depletion	27 (40%)	1.1 (0.40, 3.3)	0.8

CI, confidence interval.

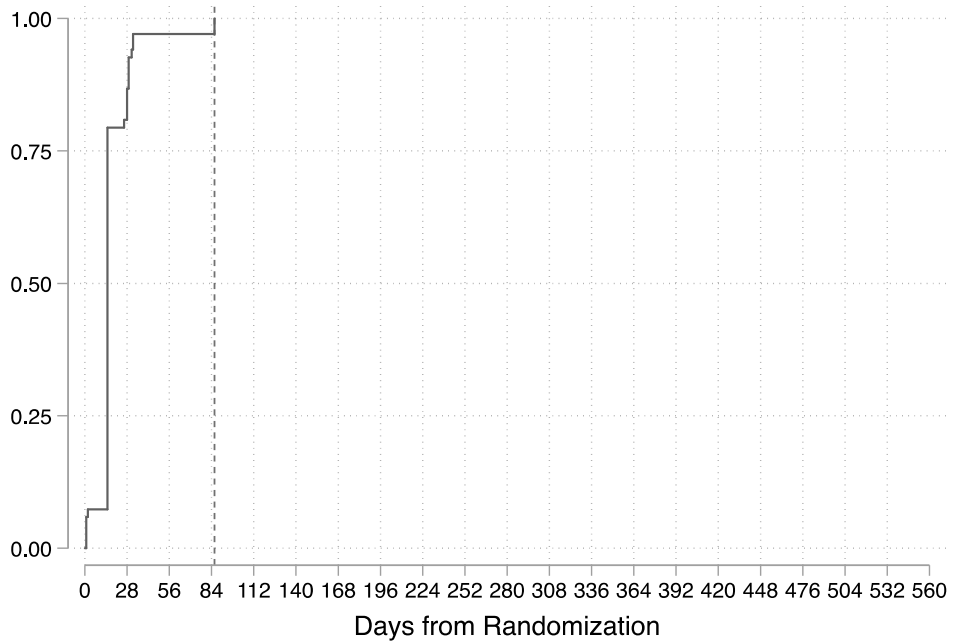
Supplementary Table 3. Univariable logistic regressions assessing whether characteristics of complete peripheral depletion associate with complete response at week 52.

	N (%) with complete response	Unadjusted Odds Ratio (95% CI)	P value
Complete peripheral depletion		1.8 (0.50, 6.4)	0.3
Achieved (n=53)	21 (40%)		
Not achieved (n=15)	4 (27%)		
Duration of complete peripheral depletion		1.4 (0.54, 3.9)	0.4
≥ 64 days (n=34)	14 (42%)		
< 64 days (n=34)	11 (32%)		
Each incremental delay of 30 days to complete peripheral depletion	25 (37%)	0.98 (0.87, 1.1)	0.7

CI, confidence interval.

Supplementary Figure 1. Kaplan-Meier graphs depicting A) Time to CD19 < 20 cells/μL, in days. Line denotes day 86 which is the last day that participants ever achieved CD19 < 20 cells/μL. B) Time to CD19 < 5 cells/μL, in days. Line denotes day 182 which is the last day that participants ever achieved CD19 < 5 cells/μL.

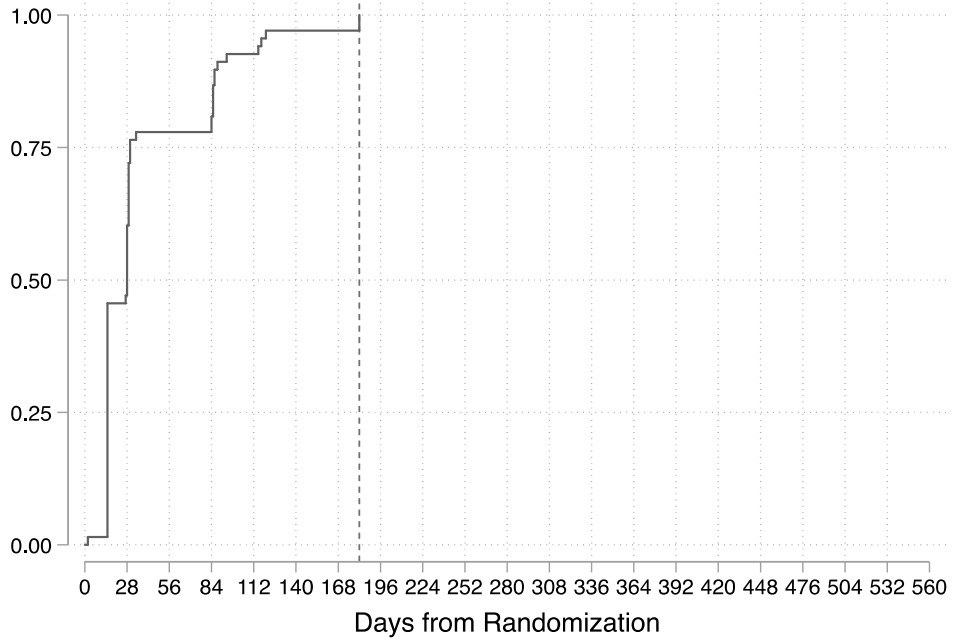
A.



Number at risk

68 13 2 2 0 0 0 0 0 0 0 0 0 0 0 0 0 0 0 0

B.



Number at risk

68 36 15 15 5 2 2 0 0 0 0 0 0 0 0 0 0 0 0 0