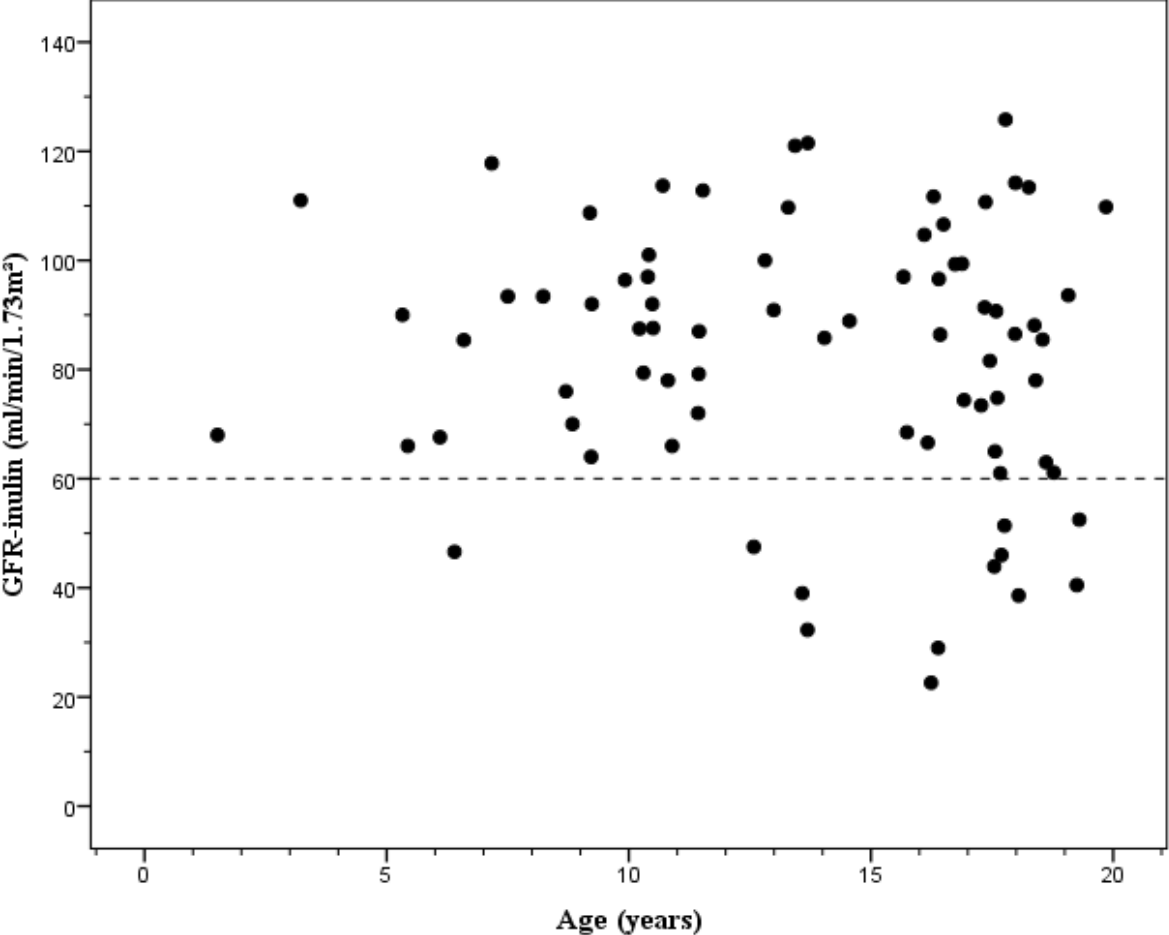
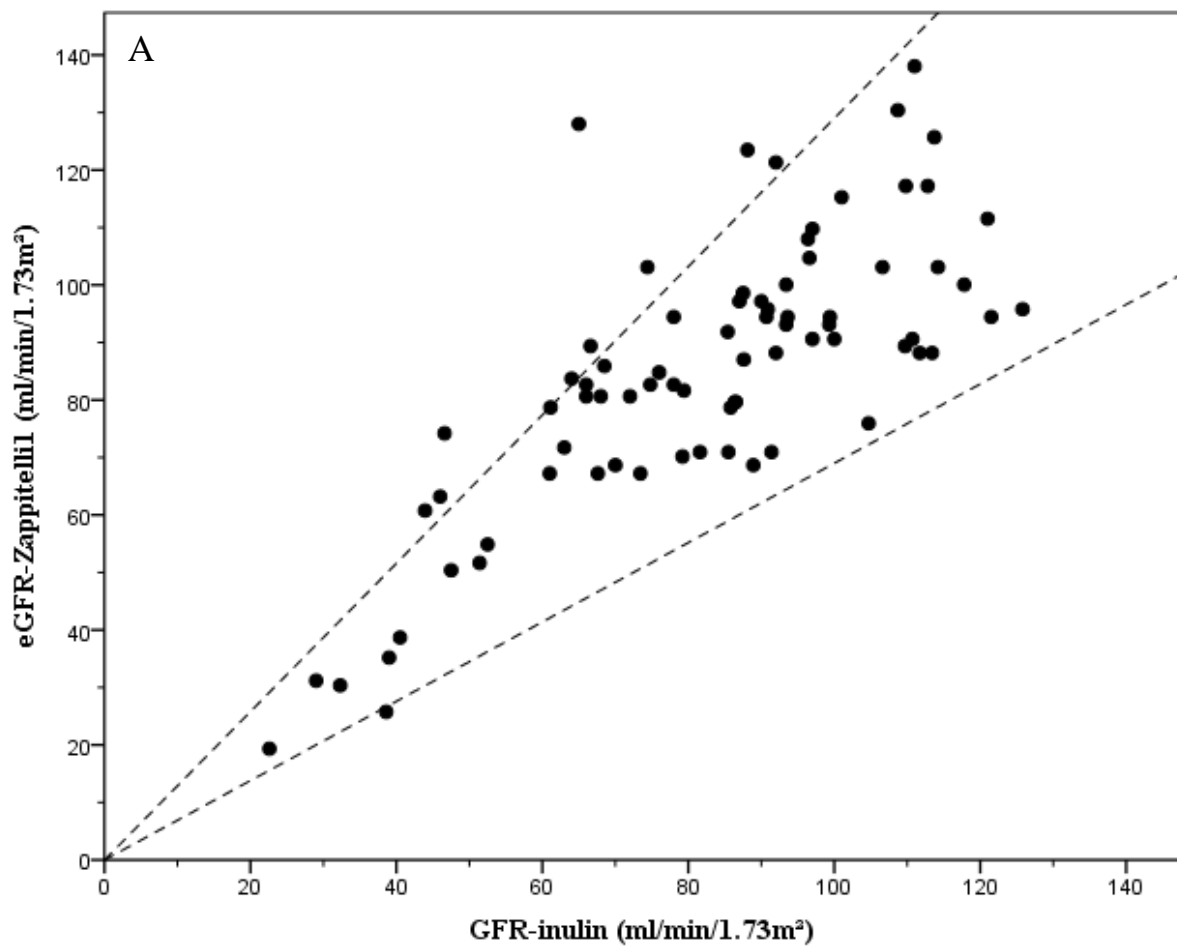
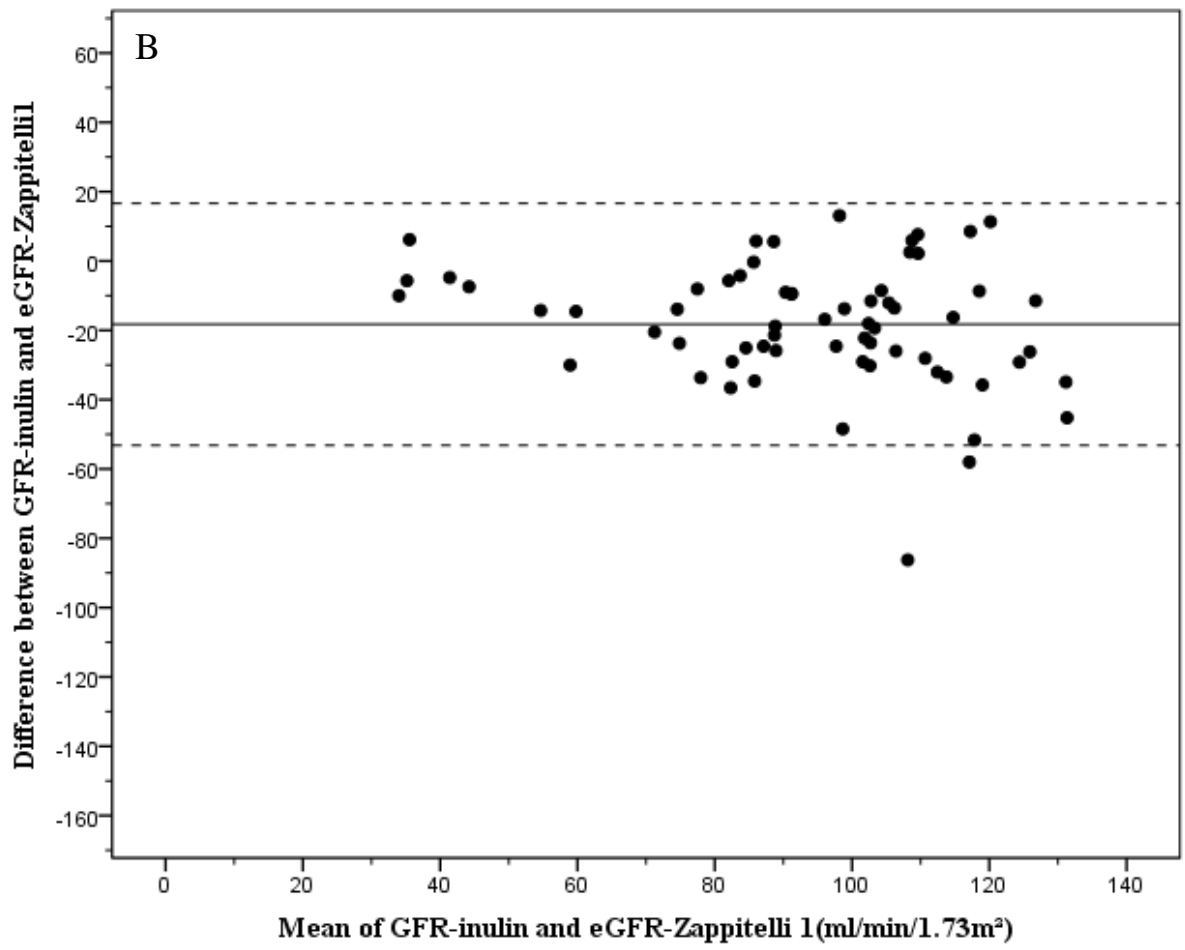


SUPPLEMENTAL FIGURE 1. Measured GFR (GFR-inulin) of children with a solitary functioning kidney presented by age. The dashed line represents K/DOQI \geq stage 3 (60 ml/min/1.73m²), which is considered as chronic kidney disease.



SUPPLEMENTAL FIGURE 2. Accuracy of estimated GFR according to the serum cystatin C-based Zappitelli-formula (eGFR-Zappitelli1) in children with a solitary functioning kidney versus measured GFR (GFR-inulin) in children with a solitary functioning kidney. **(A)** Comparison between GFR-inulin and eGFR-Zappitelli1. The dashed lines represent the values within $\pm 30\%$ of GFR-inulin. **(B)** Bland-Altman plot for GFR-inulin and eGFR-Zappitelli1. The solid line represents the mean bias, whereas the 95% limits of agreement (*i.e.* mean bias $\pm 1.96 \times$ standard deviation) are indicated by the dashed lines.





SUPPLEMENTAL FIGURE 3. Accuracy of estimated GFR according to the combined serum cystatin C-creatinine-based Zappitelli-formula (eGFR-Zappitelli2) versus measured GFR (GFR-inulin) in children with a solitary functioning kidney. **(A)** Comparison between GFR-inulin and eGFR-Zappitelli2. The dashed lines represent values within $\pm 30\%$ of GFR-inulin. **(B)** Bland-Altman plot for GFR-inulin and eGFR-Zappitelli2. The solid line represents the mean bias, whereas the 95% limits of agreement (*i.e.* mean bias $\pm 1.96 \times$ standard deviation) are indicated by the dashed lines.

