

The Spectrum of *MYH9*-Associated Nephropathy

Meredith A. Bostrom* and Barry I. Freedman†

Departments of *Biochemistry and †Internal Medicine-Nephrology, Wake Forest University School of Medicine, Winston-Salem, North Carolina

Causes of the excess incidence rates of chronic kidney disease in the African American population have long been under study. Recently, polymorphisms in the nonmuscle myosin heavy chain 9 gene (*MYH9*) have been associated with nondiabetic kidney diseases in African- and European-derived populations. Risk variants in *MYH9* contribute to approximately 70% of nondiabetic forms of ESRD in African Americans and 40 to 45% of all ESRD in this ethnic group, with lesser effects in European Americans. It is clear that *MYH9* polymorphisms have a significant impact on the incidence rates of kidney disease in African Americans. This article describes the current spectrum of biopsy-proven *MYH9*-associated kidney diseases, along with potential effects of *MYH9* on ethnic differences in clinical outcome. *MYH9* risk variants exhibit the most impressive association with any common complex kidney disease yet identified.

Clin J Am Soc Nephrol 5: 1107–1113, 2010. doi: 10.2215/CJN.08721209

The search for genes underlying susceptibility to nondiabetic, potentially hypertension-associated forms of ESRD arose in part from the controversy over whether mild to moderate essential hypertension commonly initiated chronic kidney disease (CKD) (1,2). The epidemiology of ESRD in the US Renal Data System database may not be fully accurate (3). Hypertension-associated ESRD reportedly accounts for >34% of incident African American dialysis cases and nearly 25% of European American cases (4). African Americans clearly develop nondiabetic forms of ESRD more often than do European Americans (4); however, relatively few patients with mild to moderate essential hypertension ultimately develop CKD (5,6), and the disorder labeled hypertensive ESRD aggregates in select African American families. These factors suggested an inherited basis for hypertensive nephrosclerosis (HN).

Complicating the issue of whether high BP initiates nephropathy, it was reported that physician bias led to a diagnosis of HN far more often in African Americans (7), individuals with a diagnosis of HN were typically seen by nephrologists late in their course when it was difficult to identify initiators of kidney disease (8), and renal biopsy studies in African American patients did not support that the vascular change “arteriolar nephrosclerosis” correlated with systemic BP (9,10). An important clue that the disease process labeled HN differs between European Americans and African Americans arose from kidney biopsy studies. Those studies revealed different renal lesions in African American and European Americans who were given the same clinical diagnosis “HN” (11). African American patients typically had focal global glomerulosclerosis (FGGS) with marked interstitial fibrosis, whereas European American pa-

tients demonstrated intimal medial thickening of small intrarenal arterioles with resultant reduced renal perfusion and ischemic glomerular collapse. European American patients with HN often demonstrate stabilization of kidney function and albuminuria with successful treatment of high BP, hyperlipidemia, and smoking cessation (12–15). Treatment of these cardiovascular risk factors is expected to improve renal microvascular disease, the process seen in European Americans with HN. In contrast, the primary site of renal injury in African American patients labeled with HN does not seem to be the microvasculature. The African American Study of Kidney Disease and Hypertension (AASK) demonstrated that strict BP control, including the use of angiotensin-converting enzyme inhibitors, failed to halt progression of the kidney disease that had been attributed to hypertension (16).

These phenomena, coupled with familial clustering of HN in African Americans, led to a search for nondiabetic nephropathy susceptibility genes. Other potential explanations for the higher frequency of severe kidney disease in African Americans include lower socioeconomic status, lack of access to adequate health care, and more severe hypertension (17). The recently detected major contribution of risk variants in the nonmuscle myosin heavy chain 9 gene (*MYH9*) to ESRD susceptibility in African Americans clearly demonstrates that inherited factors make major contributions to the aforementioned ethnic disparities (18–20).

MYH9 and Susceptibility to CKD

Familial aggregation of the common forms of CKD, including diabetic nephropathy and purported HN, had been recognized for 20 years (21–27). Thirty to 40% of individuals with type 1 and type 2 diabetes are at risk for the development of nephropathy. As commonly seen in HN, diabetic nephropathy clusters in select families. This observation shifted our understanding of CKD risk factors. Instead of the prevailing concept that patients with the most severely elevated BP and blood sugar levels were

Published online ahead of print. Publication date available at www.cjasn.org.

Correspondence: Dr. Barry I. Freedman, Section on Nephrology, Wake Forest University School of Medicine, Medical Center Boulevard, Winston-Salem, NC 27157-1053. Phone: 336-716-6192; Fax: 226-716-4318; E-mail: bfreedma@wfuibmc.edu

more likely to develop nephropathy, it become apparent that CKD susceptibility from systemic disorders could have an inherited basis.

Familial aggregation of ESRD is strongest in the African American population and has been observed with additional forms of CKD, including FSGS, HIV-associated nephropathy (HIVAN), and systemic lupus erythematosus. (28,29) The observations that familial clustering was independent of socioeconomic factors (28,30) and that multiple causes of CKD often clustered in African American families suggested that an overarching “renal failure susceptibility gene” was present (31).

Results of linkage analyses and candidate gene association studies in nondiabetic ESRD have been reported in African Americans; however, it was not until the application of admixture mapping or mapping by admixture linkage disequilibrium that *MYH9* was identified. Mapping by admixture linkage disequilibrium is a useful method to detect gene variants that contribute to diseases in admixed populations in which the ancestral populations have markedly different disease frequencies (32). African Americans are known to have a fourfold increase in risk for all cause ESRD, relative to European Americans (4). Diseases such as HIVAN occur up to 70 times more often in the African American population. Assuming that risk variants in kidney failure genes were derived from Africa, it was possible to compare the frequencies of approximately 1500 ancestry-informative markers spaced evenly across the genome in African Americans with nondiabetic renal diseases (FSGS and HIVAN) with those in African Americans with normal kidney function (18,19). Admixture mapping analyses demonstrated a 10% excess frequency of African ancestry on chromosome 22 with a major peak overlying the *MYH9* gene. Follow-up genotyping identified a four-single-nucleotide polymorphism (SNP) haplotype (G/C/C/T; rs4821480, rs2032487, rs4821481, and rs3752462) in *MYH9* that was strongly associated with FSGS, HIVAN, and the kidney disease historically attributed to HN in African Americans (Figure 1) (18). The risk haplotype that was referred to in the article by Kopp *et al.* (18) as E-1 (for Extended-1) has a frequency of approximately 60% in African Americans and 4% in European Americans with odds ratios (ORs) for association with FSGS of 5.0 and 7.7, respectively. These effect sizes are extremely large for common, complex human diseases.

Subsequent analyses demonstrated that the population-attributable risk from possessing *MYH9* risk alleles approximates

70% in nondiabetic ESRD in African Americans; this effect was computed using the E-1 haplotype as the surrogate risk variant (95% confidence interval 55 to 81%) (19). Stated another way, replacement of *MYH9* risk variants in the African American population with protective or neutral variants (as are often seen in the European American population) would reduce the rates of nondiabetic ESRD by a staggering 70%. Fine mapping studies are under way in an attempt to identify causative *MYH9* SNPs. Additional studies will then be necessary to understand the population risk incurred by these *MYH9* polymorphisms. It is also clear that additional factors beyond genotype must be important in the initiation of the *MYH9*-associated spectrum of kidney disease (20).

It is generally accepted that common complex diseases are not the result of mutation in a single gene but rather the cumulative effect of multiple genetic and environmental factors. For example, although nearly 40 type 2 diabetes susceptibility genes have been identified, in aggregate, they contribute to <10% of the total risk for developing diabetes (33). The strongest and most replicated diabetes genes, such as *TCF7L2*, contribute approximately a 40% increase in risk for each risk variant that is inherited (34). In contrast, *MYH9* contributes a far stronger effect on the risk for kidney disease in African American and European-derived populations.

MYH9 encodes the nonmuscle myosin heavy chain 9, which, with other subunits, forms myosin II (35). Myosin II is a motor protein that binds actin and is involved in cellular motility. *MYH9* is expressed in the podocyte, as well as in mesangial cells and arteriolar and peritubular capillaries (36). We postulate that a mutation in the *MYH9* gene product could produce podocyte injury with FSGS, although other mechanisms, including interactions between glomerular cells and abnormal platelets, remain possible and warrant further study. *MYH9* mutations had been implicated in a number of autosomal dominant syndromes: May-Hegglin, Sebastian, Fechtner, and Epstein (37,38). These syndromes are platelet disorders that are characterized by thrombocytopenia and leukocyte inclusions, with Fechtner and Epstein syndromes resulting in nephritis to varying degrees. The mutations identified in these cases are nonsense or missense mutations that result in significant structural mutations in *MYH9* and platelet abnormalities. Despite the structural mutations, few of these patients develop renal failure. It is unclear why structural defects would not necessarily result in renal failure in the autosomal dominant syndromes,

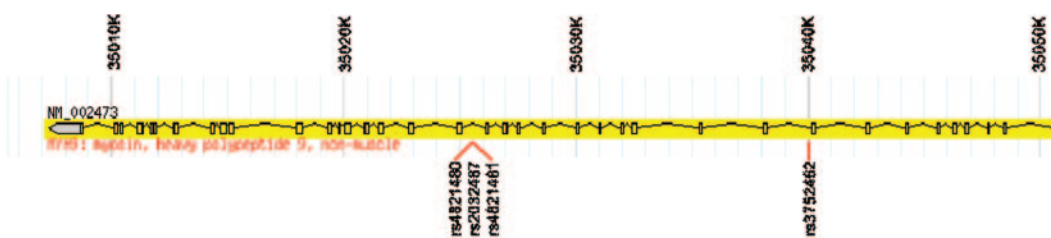


Figure 1. *MYH9* structure and location of the E-1 haplotype SNPs. The first 40 kb of *MYH9*, with exons in boxes and the promoter regions in gray, is shown. The location of the four SNPs that make up the E-1 haplotype are indicated. Gene structure was developed using Haploview (52) with infotrack downloaded from <http://www.hapmap.org>.

whereas the variants that are associated with ESRD in African Americans are intronic and confer significant risk. Functional studies on these variants will be an important future step in understanding the role of *MYH9* in ESRD.

“Second Hits” in *MYH9*-Associated Nephropathy

Initial reports revealed that approximately 35% of the general African American and 1% of the European American population are homozygous for the *MYH9* E-1 risk haplotype (18–20); however, approximately 4% of African Americans who are homozygous for the *MYH9* E-1 risk haplotype will develop idiopathic FSGS, whereas 20% of HIV-infected E-1 homozygous African Americans develops HIVAN (Jeffrey Kopp, personal communication, November 2009). Because African Americans with two *MYH9* risk variants do not uniformly develop nephropathy, co-factors for initiation of renal disease must exist (Figure 2). It is clear that viral infections can contribute to risk, on the basis of the fivefold excess frequency of nephropathy in HIV-infected *MYH9* risk homozygotes. Nonetheless, four of five HIV-infected African Americans who are homozygous for *MYH9* risk variants do not develop nephropathy. This led us to hypothesize that “second hits,” or additional factors, are required to initiate kidney disease.

On the basis of the role of HIV infection in *MYH9*-associated HIVAN (39), we postulate that gene–environment interactions could produce renal disease in *MYH9* risk homozygotes. Several non-HIV viral infections are associated with CKD, including BK virus and Parvovirus B19 (40,41). We postulate that these or other viruses that can infect renal cells or lymphocytes contribute to development of *MYH9*-associated nephropathy in the manner of HIV1 viral infection.

In addition, it remains possible that gene–gene interactions may be factors. Polymorphisms in podocin, α actinin-4, and *TRPC6* have been shown to contribute to glomerulosclerosis (42–44). It is conceivable that heterozygous mutations in these or other genes coupled with *MYH9* risk homozygosity may ultimately produce susceptibility to FSGS. For example, disruption of *MYH9* alone may not be sufficient to result in significant podocyte structural malfunction; however, mutation of other cytoskeletal components, such as α actinin-4, in addition to

MYH9 may substantially damage the structure of the podocyte and impair its function as a filtration barrier. Studies to investigate these possibilities are actively under way.

Essential Hypertension and Initiation of *MYH9*-Associated Nephropathy

As discussed in the beginning of this article, although hypertension is often listed as a cause of ESRD in African Americans, familial clustering of other forms of CKD, including diabetic nephropathy, chronic glomerulonephritis, lupus nephritis, and HIVAN in families with index cases who have “hypertensive ESRD,” suggested the presence of an overarching kidney failure susceptibility gene (1,24). An association analysis of 696 African Americans who reportedly had hypertensive ESRD revealed the important contribution made by *MYH9* polymorphisms, with SNP association OR as high as 3.4 (20). In addition, multiple regions in *MYH9* seem to produce independent susceptibility, including the major E-1 haplotype (OR 2.4), the recently identified L-1 haplotype (A/G/C/T; rs7078, rs12107, rs735853, and rs5756129; OR 1.9), and one additional SNP, rs5756152 (OR 2.3). This suggests that the disease labeled HN resides in the FSGS family (2).

An association analysis in the NHLBI-Hypertension Genetics Study (HyperGEN) demonstrated weak association between albuminuria and *MYH9* polymorphisms (45). Of greater importance, the frequency of the E-1 risk haplotype was not different in the HyperGEN African American population with hypertension when contrasted to the control populations in previous reports (18–20). This suggests that *MYH9* does not play a major role in susceptibility to essential hypertension.

We recently reported that putative HN in AASK participants was strongly *MYH9* associated (46). *MYH9* E-1 haplotype SNP rs4821481 had an OR of 1.99 ($P = 7 \times 10^{-6}$, recessive) in those with serum creatinine concentrations ≥ 2 mg/dl, increasing to OR 2.7 with serum creatinine concentrations >3 mg/dl. Thus, FGGS in AASK falls within the spectrum of *MYH9*-associated disorders. Patients with FGGS in AASK were similar to those with “hypertensive ESRD” in the Wake Forest cohort (20), considering the risk imparted by *MYH9*.

Collapsing FSGS: The Most Aggressive Lesion in the Spectrum

FSGS is a disorder of podocyte depletion (47). In contrast, HIVAN is manifested by abnormal extensive proliferation of podocytes, cells that are normally terminally differentiated. Recent results showed that HIV can directly infect the podocyte, and a series of interrelated pathways leads to loss of the differentiated phenotype with extensive proliferation and resultant glomerular collapse (39). HIV1-specific gene products may be involved in this process and interact with *MYH9*. It also remains possible that other environmental and genetic co-factors are second hits necessary for the development of podocyte proliferation. It recently became clear that mesangial immune complex deposition can also trigger the collapsing variant of *MYH9* nephropathy. HIV-negative African Americans with mesangial C1q-containing immune complexes have developed

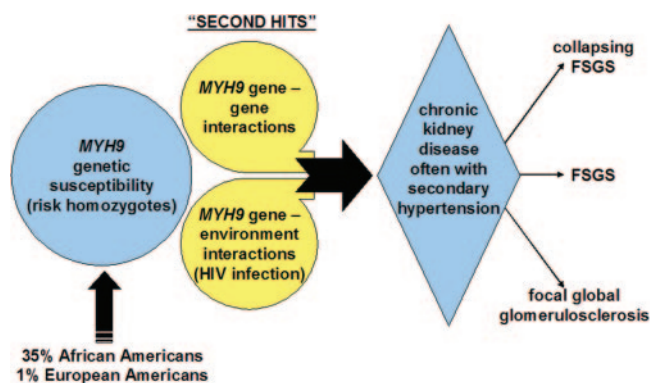


Figure 2. Proposed pathogenesis of *MYH9*-associated nephropathy.

collapsing glomerulopathy in the presence of *MYH9* risk variants (48). This broadens the spectrum of collapsing FSGS to include immune complex-mediated diseases and effects of viral infection. The effects of *MYH9* risk variants on development of the idiopathic variant of collapsing FSGS, the most common cause, is unknown; however, there is no reason to suspect that *MYH9* does not underlie this form of collapsing FSGS. This is an important renal lesion that warrants additional analysis.

The Evolving Spectrum of *MYH9*-Associated Nephropathy

The association of risk variants in *MYH9* with nondiabetic forms of nephropathy in African Americans and European-derived populations demonstrates among the strongest association with any common complex human kidney disease. In addition, although the OR for *MYH9* association with type 2 diabetic nephropathy in African Americans is 1.4 (far lower than for FSGS, HIVAN, and FGGS), approximately 16% of African Americans who receive a clinical diagnosis of type 2 diabetes-associated ESRD have disorders in the *MYH9* spectrum (49). We believe that it is most likely that these patients actually have FSGS with coincident diabetes, although kidney biopsy studies remain to be performed to demonstrate whether the classic histologic changes that are seen in diabetic nephropathy are present. Nonetheless, *MYH9* contributes to 40 to 45% of all ESRD in the African American population, as well as FSGS and CKD in Europeans and European Americans.

The emerging spectrum of *MYH9* nephropathy clearly links FGGS (the disease historically attributed to hypertension), idiopathic FSGS, and collapsing variants of FSGS secondary to HIV infection and C1q immune complex deposition (Figure 3). This disease spectrum explains the presence of multiple causes of CKD in single African American families, a phenomenon rarely observed in non-African American families. This finding has important implications, including an inherited mechanism of disease in the African American population, although the contribution of environmental risk factors to initiation of kidney scarring should not be downplayed.

The implications and novel questions raised by this observation extend beyond the epidemiology of CKD (Table 1). The unexplained poorer allograft survival of kidneys that are do-

Table 1. Issues under investigation in *MYH9*-associated nephropathy

Clinical	value of genetic screening to identify individuals who are at risk for future nephropathy
	influence of donor genotypes on outcomes after kidney transplantation
	potential influence on ethnic differences in outcomes after dialysis initiation
	assessment of renal histology: variants in FSGS on the basis of genotype
	lesions in African Americans with clinically diagnosed diabetic nephropathy
	detection of environmental co-factors that may interact to initiate renal disease
	determine natural history of disease and effect on rates of nephropathy progression
	determine response to conventional and novel therapies for FSGS and related disorders
Basic	identify the disease-causing polymorphism(s)
	determine mechanisms of podocyte injury, and develop preventive therapies
	detect additional genes that interact to initiate renal disease
	identify the factor(s) on the African continent that selected for nephropathy risk variants

nated by African Americans may be attributable, in part, to *MYH9* mutations. Deceased-donor kidneys from African Americans survive less well than kidneys that are donated by European Americans, whether transplanted into African American or European American recipients (50,51). It is possible that the combined effects of cold ischemia time, nephrotoxic calcineurin inhibitors, and donor-recipient genotype interactions may interact with *MYH9* to explain this phenomenon.

The rapidly expanding spectrum of *MYH9*-associated kidney diseases has been a major breakthrough in our understanding of the epidemiology of ESRD, particularly in the African American population. The effects of various second hits may dictate the type of *MYH9*-associated renal lesion. For example, HIV infection most commonly yields collapsing glomerulopathy, whereas other co-factors might produce FGGS or classic FSGS. The role of these co-factors and resultant renal histologic patterns remain important to determine. It is abundantly clear that mild to moderate forms of essential hypertension are insufficient to initiate kidney disease among *MYH9* risk homozygotes. The majority of African Americans who have low-level proteinuria and are labeled as having HN and hypertension-associated ESRD have an incorrect diagnosis. We remain optimistic that identification and treatment of environmental second hits, as well as drug therapies directed at maintaining the normal podocyte cytoskeletal architecture, offer hope for the prevention of CKD in the African American population. *MYH9* encodes a motor protein involved in the movement of actin fila-

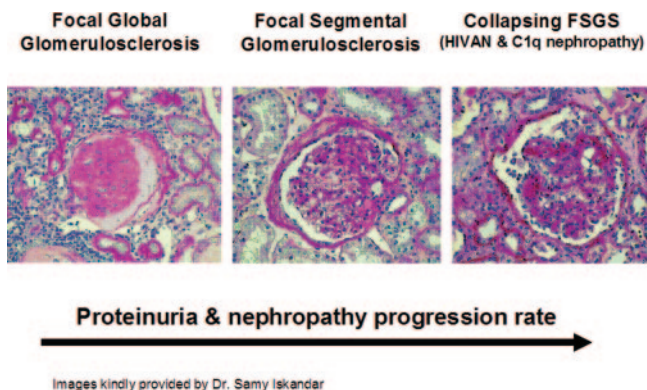


Figure 3. The spectrum of *MYH9*-associated nephropathy.

Images kindly provided by Dr. Samy Iskandar

ments in the podocyte and is also expressed in other renal cells. We believe that alterations in podocyte architecture lead to the spectrum of MYH9-associated nephropathies, because FSGS is commonly associated with other gene polymorphisms that interrupt the podocyte cytoskeleton and glomerular filtration barrier.

It is our opinion that screening for MYH9 risk variants may eventually be useful in high-risk populations such as African Americans with close relatives who have ESRD or in those who wish to donate a kidney; however, the high frequency of MYH9 risk variants in African-derived individuals could render this a less useful screening test. It is important that the additional triggers, or “second hits,” required for initiation of renal disease be identified: Either gene–gene or gene–environment interactions. MYH9 genotypes may be more useful to clinicians for screening purposes and ultimately for selecting therapies, when second hits are identified. For example, if viral infections or other environmental exposures interact with MYH9 to produce nephropathy, then immunization against infection or avoidance of exposures may be protective from kidney disease even in those who harbor risk variants. At present, novel therapies for slowing or preventing MYH9-associated nephropathy and use of MYH9 genotypes for screening purposes require further study.

Conclusions

Genetic methods have contributed to the detection of a newly recognized spectrum of related kidney diseases. MYH9-associated nephropathy is clearly the most common form of CKD in African Americans.

Acknowledgments

This work was supported in part by National Institutes of Health grants RO1 DK 070941, RO1 DK 071891, and RO1 DK084149 (B.I.F.).

Disclosures

None.

References

- Freedman BI, Iskandar SS, Appel RG: The link between hypertension and nephrosclerosis. *Am J Kidney Dis* 25: 207–221, 1995
- Freedman BI, Sedor JR: Hypertension-associated kidney disease: Perhaps no more. *J Am Soc Nephrol* 19: 2047–2051, 2008
- Zarif L, Covic A, Iyengar S, Sehgal AR, Sedor JR, Schelling JR: Inaccuracy of clinical phenotyping parameters for hypertensive nephrosclerosis. *Nephrol Dial Transplant* 15: 1801–1807, 2000
- US Renal Data System: *USRDS 2008 Annual Data Report: Atlas of Chronic Kidney Disease and End-Stage Renal Disease in the United States*, Bethesda, National Institutes of Health, National Institute of Diabetes and Digestive and Kidney Diseases, 2008
- Shulman NB, Ford CE, Hall WD, Blaufox MD, Simon D, Langford HG, Schneider KA: Prognostic value of serum creatinine and effect of treatment of hypertension on renal function: Results from the hypertension detection and follow-up program. The Hypertension Detection and Follow-up Program Cooperative Group. *Hypertension* 13: I80–I93, 1989
- Walker WG, Neaton JD, Cutler JA, Neuwirth R, Cohen JD: Renal function change in hypertensive members of the Multiple Risk Factor Intervention Trial: Racial and treatment effects. The MRFIT Research Group. *JAMA* 268: 3085–3091, 1992
- Perneger TV, Whelton PK, Klag MJ, Rossiter KA: Diagnosis of hypertensive end-stage renal disease: Effect of patient's race. *Am J Epidemiol* 141: 10–15, 1995
- Schlessinger SD, Tankersley MR, Curtis JJ: Clinical documentation of end-stage renal disease due to hypertension. *Am J Kidney Dis* 23: 655–660, 1994
- Freedman BI, Iskander SS, Buckalew VM Jr, Burkart JM, Appel RG: Renal biopsy findings in presumed hypertensive nephrosclerosis. *Am J Nephrol* 14: 90–94, 1994
- Fogo A, Breyer JA, Smith MC, Cleveland WH, Agodoa L, Kirk KA, Glassock R: Accuracy of the diagnosis of hypertensive nephrosclerosis in African Americans: A report from the African American Study of Kidney Disease (AASK) Trial. AASK Pilot Study Investigators. *Kidney Int* 51: 244–252, 1997
- Marcantoni C, Ma LJ, Federspiel C, Fogo AB: Hypertensive nephrosclerosis in African Americans versus Caucasians. *Kidney Int* 62: 172–180, 2002
- Bleyer AJ, Chen R, D'Agostino RB Jr, Appel RG: Clinical correlates of hypertensive end-stage renal disease. *Am J Kidney Dis* 31: 28–34, 1998
- Bianchi S, Bigazzi R, Caiazza A, Campese VM: A controlled, prospective study of the effects of atorvastatin on proteinuria and progression of kidney disease. *Am J Kidney Dis* 41: 565–570, 2003
- Phisitkul K, Hegazy K, Chuahirun T, Hudson C, Simoni J, Rajab H, Wesson DE: Continued smoking exacerbates but cessation ameliorates progression of early type 2 diabetic nephropathy. *Am J Med Sci* 335: 284–291, 2008
- Shepherd J, Kastelein JJ, Bittner V, Deedwania P, Breazna A, Dobson S, Wilson DJ, Zuckerman A, Wenger NK, Treating to New Targets Investigators: Effect of intensive lipid lowering with atorvastatin on renal function in patients with coronary heart disease: The Treating to New Targets (TNT) Study. *Clinical J Am Soc Nephrol* 2: 1131–1139, 2007
- Appel LJ, Wright JT Jr, Greene T, Kusek JW, Lewis JB, Wang X, Lipkowitz MS, Norris KC, Bakris GL, Rahman M, Contreras G, Rostand SG, Kopple JD, Gabbai FB, Schulman GI, Gassman JJ, Charleston J, Agodoa LY, African American Study of Kidney Disease and Hypertension Collaborative Research Group: Long-term effects of renin-angiotensin system-blocking therapy and a low blood pressure goal on progression of hypertensive chronic kidney disease in African Americans. *Arch Intern Med* 168: 832–839, 2008
- McClellan W, Tuttle E, Issa A: Racial differences in the incidence of hypertensive end-stage renal disease (ESRD) are not entirely explained by differences in the prevalence of hypertension. *Am J Kidney Dis* 12: 285–290, 1988
- Kopp JB, Smith MW, Nelson GW, Johnson RC, Freedman BI, Bowden DW, Oleksyk T, McKenzie LM, Kajiyama H, Ahuja TS, Berns JS, Briggs W, Cho ME, Dart RA, Kimmel PL, Korbet SM, Michel DM, Mokrzycki MH, Schelling JR, Simon E, Trachtman H, Vlahov D, Winkler CA: MYH9 is a

- major-effect risk gene for focal segmental glomerulosclerosis. *Nat Genet* 40: 1175–1184, 2008
19. Kao WH, Klag MJ, Meoni LA, Reich D, Berthier-Schaad Y, Li M, Coresh J, Patterson N, Tandon A, Powe NR, Fink NE, Sadler JH, Weir MR, Abboud HE, Adler SG, Divers J, Iyengar SK, Freedman BI, Kimmel PL, Knowler WC, Kohn OF, Kramp K, Leehey DJ, Nicholas SB, Pahl MV, Schelling JR, Sedor JR, Thornley-Brown D, Winkler CA, Smith MW, Parekh RS: MYH9 is associated with nondiabetic end-stage renal disease in African Americans. *Nat Genet* 40: 1185–1192, 2008
 20. Freedman BI, Hicks PJ, Bostrom MA, Cunningham ME, Liu Y, Divers J, Kopp JB, Winkler CA, Nelson GW, Langefeld CD, Bowden DW: Polymorphisms in the non-muscle myosin heavy chain 9 gene (MYH9) are strongly associated with end-stage renal disease historically attributed to hypertension in African Americans. *Kidney Int* 75: 736–745, 2009
 21. Freedman BI, Tuttle AB, Spray BJ: Familial predisposition to nephropathy in African-Americans with non-insulin-dependent diabetes mellitus. *Am J Kidney Dis* 25: 710–713, 1995
 22. Ferguson R, Grim CE, Opgenorth TJ: A familial risk of chronic renal failure among blacks on dialysis? *J Clin Epidemiol* 41: 1189–1196, 1988
 23. Seaquist ER, Goetz FC, Rich S, Barbosa J: Familial clustering of diabetic kidney disease: Evidence for genetic susceptibility to diabetic nephropathy. *N Engl J Med* 320: 1161–1165, 1989
 24. Freedman BI, Spray BJ, Tuttle AB, Buckalew VM Jr: The familial risk of end-stage renal disease in African Americans. *Am J Kidney Dis* 21: 387–393, 1993
 25. Freedman BI, Wilson CH, Spray BJ, Tuttle AB, Olorenshaw IM, Kammer GM: Familial clustering of end-stage renal disease in blacks with lupus nephritis. *Am J Kidney Dis* 29: 729–732, 1997
 26. Freedman BI, Soucie JM, Stone SM, Pegram S: Familial clustering of end-stage renal disease in blacks with HIV-associated nephropathy. *Am J Kidney Dis* 34: 254–258, 1999
 27. Bergman S, Key BO, Kirk KA, Warnock DG, Rostant SG: Kidney disease in the first-degree relatives of African-Americans with hypertensive end-stage renal disease. *Am J Kidney Dis* 27: 341–346, 1996
 28. Lei HH, Perneger TV, Klag MJ, Whelton PK, Coresh J: Familial aggregation of renal disease in a population-based case-control study. *J Am Soc Nephrol* 9: 1270–1276, 1998
 29. Freedman BI, Volkova NV, Satko SG, Krisher J, Jurkowitz C, Soucie JM, McClellan WM: Population-based screening for family history of end-stage renal disease among incident dialysis patients. *Am J Nephrol* 25: 529–535, 2005
 30. Song EY, McClellan WM, McClellan A, Rajyalakshmi G, Hadley AC, Krisher J, Clay M, Freedman BI: Effect of community characteristics on familial clustering of end-stage renal disease. *Am J Nephrol* 30: 499–504, 2009
 31. Freedman BI: End-stage renal failure in African Americans: Insights in kidney disease susceptibility. *Nephrol Dial Transplant* 17: 198–200, 2002
 32. Smith MW, Patterson N, Lautenberger JA, Truelove AL, McDonald GJ, Waliszewska A, Kessing BD, Malasky MJ, Scafe C, Le E, De Jager PL, Mignault AA, Yi Z, De The G, Essex M, Sankale JL, Moore JH, Poku K, Phair JP, Goedert JJ, Vlahov D, Williams SM, Tishkoff SA, Winkler CA, De La Vega FM, Woodage T, Sninsky JJ, Hafler DA, Altshuler D, Gilbert DA, O'Brien SJ, Reich D: A high-density admixture map for disease gene discovery in African Americans. *Am J Hum Genet* 74: 1001–1013, 2004
 33. McCarthy MI: What will genome-wide association studies mean to the clinical endocrinologist? *J Clin Endocrinol Metab* 94: 2245–2246, 2009
 34. Grant SF, Thorleifsson G, Reynisdottir I, Benediktsson R, Manolescu A, Sainz J, Helgason A, Stefansson H, Emilsson V, Helgadóttir A, Styrkarsdóttir U, Magnusson KP, Walters GB, Palsdóttir E, Jonsdóttir T, Gudmundsdóttir T, Gylfason A, Saemundsdóttir J, Wilensky RL, Reilly MP, Rader DJ, Bagger Y, Christiansen C, Gudnason V, Sigurdsson G, Thorsteinsdóttir U, Gulcher JR, Kong A, Stefansson K: Variant of transcription factor 7-like 2 (TCF7L2) gene confers risk of type 2 diabetes. *Nat Genet* 38: 320–323, 2006
 35. Marini M, Bruschi M, Pecci A, Romagnoli R, Musante L, Candiano G, Ghiggeri GM, Balduini C, Seri M, Ravazzolo R: Non-muscle myosin heavy chain IIA and IIB interact and co-localize in living cells: Relevance for MYH9-related disease. *Int J Mol Med* 17: 729–736, 2006
 36. Arrondel C, Vodovar N, Knebelmann B, Grunfeld JP, Gubler MC, Antignac C, Heidet L: Expression of the non-muscle myosin heavy chain IIA in the human kidney and screening for MYH9 mutations in Epstein and Fechtner syndromes. *J Am Soc Nephrol* 13: 65–74, 2002
 37. Heath KE, Campos-Barros A, Toren A, Rozenfeld-Granot G, Carlsson LE, Savige J, Denison JC, Gregory MC, White JG, Barker DF, Greinacher A, Epstein CJ, Glucksman MJ, Martignetti JA: Nonmuscle myosin heavy chain IIA mutations define a spectrum of autosomal dominant macrothrombocytopenias: May-Hegglin anomaly and Fechtner, Sebastian, Epstein, and Alport-like syndromes. *Am J Hum Genet* 69: 1033–1045, 2001
 38. Seri M, Cusano R, Gangarossa S, Caridi G, Bordo D, Lo NC, Ghiggeri GM, Ravazzolo R, Savino M, Del Vecchio M, d'Apolito M, Iolascon A, Zelante LL, Savoia A, Balduini CL, Noris P, Magrini U, Belletti S, Heath KE, Babcock M, Glucksman MJ, Aliprandis E, Bizzaro N, Desnick RJ, Martignetti JA: Mutations in MYH9 result in the May-Hegglin anomaly, and Fechtner and Sebastian syndromes. The May-Hegglin/Fechtner Syndrome Consortium. *Nat Genet* 26: 103–105, 2000
 39. Papeta N, Chan KT, Prakash S, Martino J, Kiryluk K, Ballard D, Bruggeman LA, Frankel R, Zheng Z, Klotman PE, Zhao H, D'Agati VD, Lifton RP, Gharavi AG: Susceptibility loci for murine HIV-associated nephropathy encode trans-regulators of podocyte gene expression. *J Clin Invest* 119: 1178–1188, 2009
 40. Tanawattanacharoen S, Falk RJ, Jennette JC, Kopp JB: Parvovirus B19 DNA in kidney tissue of patients with focal segmental glomerulosclerosis. *Am J Kidney Dis* 35: 1166–1174, 2000
 41. Celik B, Randhawa PS: Glomerular changes in BK virus nephropathy. *Hum Pathol* 35: 367–370, 2004
 42. Boute N, Gribouval O, Roselli S, Benessy F, Lee H, Fuchshuber A, Dahan K, Gubler MC, Niaudet P, Antignac C: NPHS2, encoding the glomerular protein podocin, is mutated in autosomal recessive steroid-resistant nephrotic syndrome. *Nat Genet* 24: 349–354, 2000
 43. Kaplan JM, Kim SH, North KN, Rennke H, Correia LA, Tong HQ, Mathis BJ, Rodriguez-Perez JC, Allen PG, Beggs

- AH, Pollak MR: Mutations in ACTN4, encoding alpha-actinin-4, cause familial focal segmental glomerulosclerosis. *Nat Genet* 24: 251–256, 2000
44. Winn MP, Conlon PJ, Lynn KL, Farrington MK, Creazzo T, Hawkins AF, Daskalakis N, Kwan SY, Ebersviller S, Burchette JL, Pericak-Vance MA, Howell DN, Vance JM, Rosenberg PB: A mutation in the TRPC6 cation channel causes familial focal segmental glomerulosclerosis. *Science* 308: 1801–1804, 2005
 45. Freedman BI, Kopp JB, Winkler CA, Nelson GW, Rao DC, Eckfeldt JH, Leppert MF, Hicks PJ, Divers J, Langefeld CD, Hunt SC: Polymorphisms in the nonmuscle myosin heavy chain 9 gene (MYH9) are associated with albuminuria in hypertensive African Americans: The HyperGEN study. *Am J Nephrol* 29: 626–632, 2009
 46. Lipkowitz MS, Iyengar S, Molineros J, Langefeld CD, Comeau ME, Klotman PE, Bowden DW, Freedman RG, Khitrov G, Zhang W, Kao WH, Parekh RS, Choi M, Kopp JB, Winkler CA, Nelson G, Freedman BI, Bottinger EP, AASK Investigators: Association analysis of the non-muscle myosin heavy chain 9 gene (MYH9) in hypertensive nephropathy: African American Study of Kidney Disease and Hypertension (AASK) [Abstract]. *J Am Soc Nephrol* 20: 56A, 2009
 47. Barisoni L, Kriz W, Mundel P, D'Agati V: The dysregulated podocyte phenotype: A novel concept in the pathogenesis of collapsing idiopathic focal segmental glomerulosclerosis and HIV-associated nephropathy. *J Am Soc Nephrol* 10: 51–61, 1999
 48. Reeves-Daniel AM, Iskandar SS, Bowden DW, Bostrom MA, Hicks PJ, Comeau ME, Langefeld CD, Freedman BI: Is collapsing C1q nephropathy another MYH9-associated kidney disease? A case report. *Am J Kidney Dis* January 27, 2010 [epub ahead of print]
 49. Freedman BI, Hicks PJ, Bostrom MA, Comeau ME, Divers J, Bleyer AJ, Kopp JB, Winkler CA, Nelson GW, Langefeld CD, Bowden DW: Non-muscle myosin heavy chain 9 gene MYH9 associations in African Americans with clinically diagnosed type 2 diabetes mellitus-associated ESRD. *Nephrol Dial Transplant* 24: 3366–3371, 2009
 50. Katznelson S, Gjertson DW, Cecka JM: The effect of race and ethnicity on kidney allograft outcome. *Clin Transpl* 379–394, 1995
 51. Callender CO, Cherikh WS, Miles PV, Hermes A, Maddox G, Nash J, Hernandez A, Burston B: Blacks as donors for transplantation: Suboptimal outcomes overcome by transplantation into other minorities. *Transplant Proc* 40: 995–1000, 2008
 52. Barrett JC, Fry B, Maller J, Daly MJ: Haploview: Analysis and visualization of LD and haplotype maps. *Bioinformatics* 21: 263–265, 2005