

Correction

Bomback AS, Perazella MA, Choi MJ. American Society of Nephrology Quiz and Questionnaire 2015: Glomerular Diseases. *Clin J Am Soc Nephrol* 11: 884–890, 2016.

Due to author error, Figure 5A, shows a histologically normal glomerulus from the kidney biopsy of the patient discussed in Case 2; therefore the figure legend should read as follows:

Kidney biopsy specimen for patient in Case 2. The glomerulus in panel (A) appears histologically

unremarkable. The glomerulus in block (B) contains a cellular lesion of FSGS, which projects into the initial segmental of proximal tubule, thus fulfilling criteria for a glomerular tip lesion. Original magnification, $\times 400$ in A; $\times 400$ in B. Courtesy of Dr. Glen Markowitz, Department of Pathology and Cell Biology, Columbia University College of Physicians and Surgeons, New York, NY.

Published online ahead of print. Publication date available at www.cjasn.org.

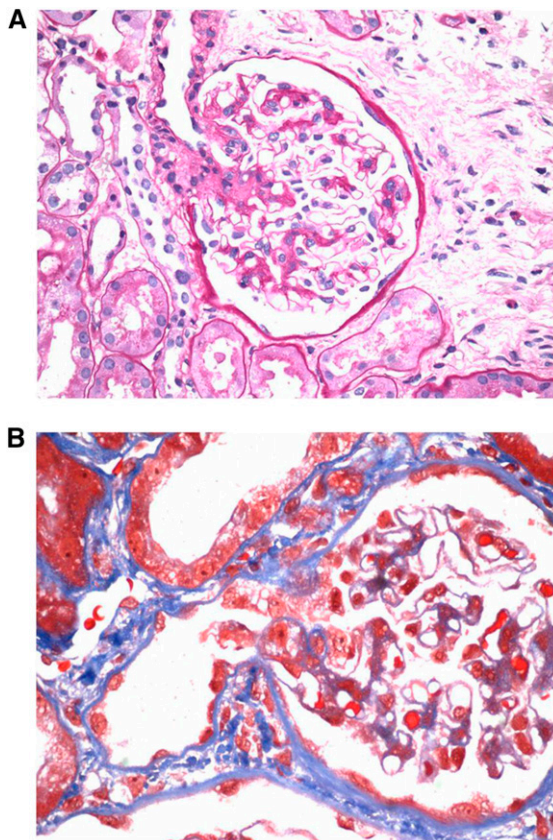


Figure 5. | **Kidney biopsy specimen for patient in Case 2.** The glomerulus in panel (A) appears histologically unremarkable. The glomerulus in block (B) contains a cellular lesion of FSGS, which projects into the initial segmental of proximal tubule, thus fulfilling criteria for a glomerular tip lesion. Original magnification, $\times 400$ in A; $\times 400$ in B. Courtesy of Dr. Glen Markowitz, Department of Pathology and Cell Biology, Columbia University College of Physicians and Surgeons, New York, NY.