

## Supplemental Material Table of Contents

**Supplemental Table 1. Studied causes of end-stage kidney disease by subtype, coded according to the International Classification of Disease (ICD10).**

**Supplemental Table 2. Standardized incidence rates of cancer-related ESKD per million inhabitants, overall and by subtype, age, and sex, 2006-2015.**

**Supplemental Figure 1. Access to kidney transplantation among wait-listed patients with cancer-related ESKD and matched controls**

**Supplemental Table 1. Studied causes of end-stage kidney disease by subtype, coded according to the International Classification of Disease 10th revision (ICD10)**

Cancer related end stage kidney disease	ICD 10 code	Cause of end-stage kidney disease	N*
<b>Kidney and urinary tract cancer</b>			
Benign neoplasm of kidney and the urinary tract	D30.0	Benign neoplasm of kidney	72
Malignant neoplasm of kidney	C64	Nephroblastoma, Wilm's tumor	19
		Renal cell carcinoma	547
		Tubulopapillary carcinoma	16
		Other renal cell carcinoma including human chromophobe cell renal carcinoma	126
		Renal sarcoma	14
		Renal pelvis	63
		Ureter	44
Malignant neoplasm of urinary tract	C65	Malignant neoplasm of renal pelvis	63
	C66	Malignant neoplasm of ureter	44
	C67.9	Malignant neoplasm of bladder	107
	Z85.5	Personal history of malignant neoplasm of urinary tract	128
<b>Nephrotoxins</b>			
Adverse effects of antineoplastic drugs	T45.1	Antimetabolites: methotrexate	8
		Anti-tumor antibiotic : mitomycin C	3
		Vinca alkaloid : vincristine	1
		Platinum derivatives: cisplatin, carboplatin	169
		Alkylating agents: cyclophosphamide	11
		ifosfamide	14
Radiation effects, unspecified	T66	Radiotherapy	86

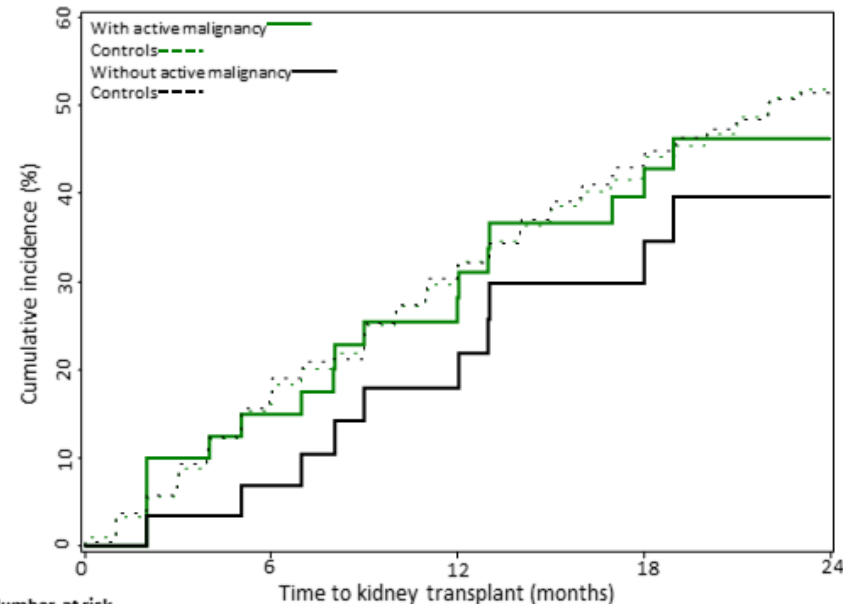
\*Cases could have multiple causes of ESKD

**Supplemental Table 2. Standardized incidence rates of cancer-related ESKD per million inhabitants, overall and by subtype, age, and sex, 2006-2015.**

	Cancer-related ESKD			nephrotoxin-related end-stage kidney disease			urinary tract cancer-related end-stage kidney disease		
	N	Incidence	(95% CI)	N	Incidence	(95% CI)	N	Incidence	(95% CI)
<b>Overall</b>	1351	2.22	(2.10-2.34)	264	0.43	(0.38-0.49)	1087	1.80	(1.68-1.90)
<b>Sex</b>									
Men	995	3.38	(3.17-3.59)	163	0.58	(0.49-0.66)	832	2.96	(2.76-3.16)
Women	356	1.02	(1.25-1.17)	101	0.33	(0.27-0.40)	255	0.83	(0.73-0.94)
<b>Age (years)</b>									
<44	61	0.17	(0.13-0.22)	26	0.07	(0.05-0.10)	35	0.10	(0.07-0.13)
45-64	333	2.14	(1.91-2.37)	103	0.66	(0.53-0.79)	230	1.48	(1.29-1.67)
65-74	393	7.59	(6.84-8.35)	85	1.65	(1.30-2.01)	308	5.94	(5.27-6.60)
≥75	564	10.38	(9.52-11.24)	50	0.91	(0.66-1.17)	514	9.46	(8.64-10.28)
<b>Year at dialysis start</b>									
2006	89	1.87	(1.48-2.26)	16	0.34	(0.17-0.50)	73	1.54	(1.18-1.89)
2007	108	2.06	(1.67-2.45)	17	0.32	(0.17-0.48)	91	1.74	(1.38-2.09)
2008	106	1.92	(1.55-2.28)	19	0.34	(0.19-0.50)	87	1.57	(1.24-1.90)
2009	107	1.81	(1.46-2.15)	24	0.40	(0.24-0.57)	83	1.40	(1.10-1.70)
2010	142	2.22	(1.86-2.59)	27	0.42	(0.26-0.58)	115	1.80	(1.47-2.13)
2011	155	2.39	(2.01-2.76)	22	0.34	(0.20-0.48)	133	2.05	(1.70-2.40)
2012	153	2.33	(1.96-2.70)	35	0.53	(0.35-0.71)	118	1.79	(1.47-2.12)
2013	157	2.38	(2.01-2.75)	31	0.47	(0.30-0.63)	126	1.91	(1.57-2.24)
2014	148	2.23	(1.87-2.59)	24	0.36	(0.22-0.50)	124	1.87	(1.54-2.20)
2015	186	2.79	(2.39-3.19)	49	0.73	(0.53-0.94)	137	2.05	(1.71-2.30)

CI, confidence interval; Incidence was estimated per million population and adjusted for age and sex, with the 2015 French population as the reference

**A- Access to kidney transplantation among wait-listed nephrotoxin-related ESKD patients**

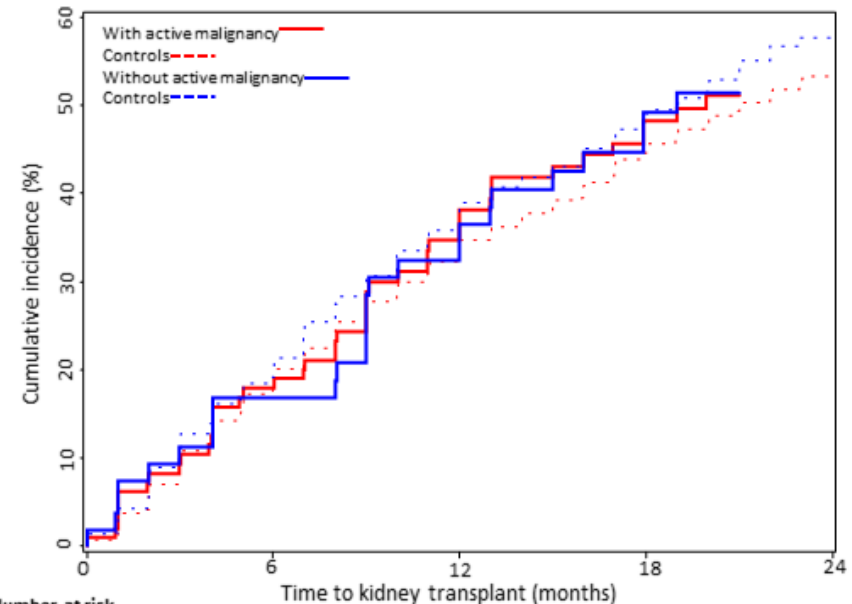


Number at risk									
Time to kidney transplant (months)									
Controls <sup>a</sup>	538	492	433	382	332	292	255	538	492
Nephrotoxin related-ESKD with active malignancy	12	11	8	7	6	6	5	12	11
Controls <sup>b</sup>	381	345	299	272	231	202	177	381	345
Nephrotoxin related-ESKD without active malignancy	29	29	28	24	22	17	15	29	29

<sup>a</sup>Controls for nephrotoxin-related ESKD patients

<sup>b</sup>Controls for nephrotoxin-related ESKD patients without active malignancy

**B- Access to kidney transplantation among wait-listed urinary tract cancer-related ESKD patients**



Number at risk									
Time to kidney transplant (months)									
Controls <sup>c</sup>	1260	1154	1001	887	769	677	585	1260	1154
Urinary tract cancer-ESKD with active malignancy	45	38	32	28	20	17	16	45	38
Controls <sup>d</sup>	675	596	517	436	378	320	279	675	596
Urinary tract cancer-ESKD without active malignancy	55	48	46	40	33	27	22	55	48

<sup>c</sup>Controls for urinary tract cancer-related patients with active malignancy

<sup>d</sup>Controls for urinary tract cancer-related patients without active malignancy

**Supplemental Figure 1. Access to kidney transplantation among wait-listed patients with cancer-related ESKD and matched controls**