

SUGGESTED ELECTRONIC APPENDIX

Table S1: Hazard ratio (95% confidence intervals) of post-transplant death (all-cause or cardiovascular) or graft failure or delayed graft function patients treated with PD prior to transplantation compared to those treated with HD before transplantation (reference) (n=14,508) with follow-up for up to 6 years (7/2001-6/2007)

	minimally adjusted		Propensity score adjusted	
	<i>HR (95% CI)</i>	<i>P-value</i>	<i>HR (95% CI)</i>	<i>P-value</i>
Graft failure censored <i>all-cause</i> death	0.67 (0.55-0.82)	<0.001	0.72 (0.59-0.89)	0.002
Graft failure censored <i>cardiovascular</i> death	0.38 (0.23-0.62)	<0.001	0.39 (0.24-0.64)	<0.001
Death censored graft failure	0.83 (0.71-0.96)	0.010	0.82 (0.70-0.95)	0.009
Combined all-cause death or graft failure	0.77 (0.68-0.87)	<0.001	0.79 (0.70-0.90)	<0.001
	<i>OR (95% CI)</i>	<i>P-value</i>	<i>OR (95% CI)</i>	<i>P-value</i>
Delayed Graft Function	0.64 (0.56-0.73)	<0.001	0.73 (0.64-0.84)	<0.001

Figure Legends

Figure S1: Distribution of propensity score in total population (before matching) (panel A) and in the matched cohort (panel B).

Figure S2: Flow chart of the patient selection

Figure S3: HR (and 95% CI as error bars) of death-censored graft failure of patients treated with PD prior to transplantation compared to those treated with HD (reference) in different sub-group of patients using multivariate fully adjusted (case-mix, MICS and transplant covariates) Cox regression models

Figure S4: HR (and 95% CI as error bars) of combined outcome (all-cause mortality and graft loss) of patients treated with PD prior to transplantation compared to those treated with HD (reference) in different sub-group of patients using multivariate fully adjusted (case-mix, MICS and transplant covariates) Cox regression models

Figure S5: OR (and 95% CI as error bars) of delayed graft function of patients treated with PD prior to transplantation compared to those treated with HD (reference) in different sub-group of patients using multivariate fully adjusted (case-mix, MICS and transplant covariates) logistic regression models

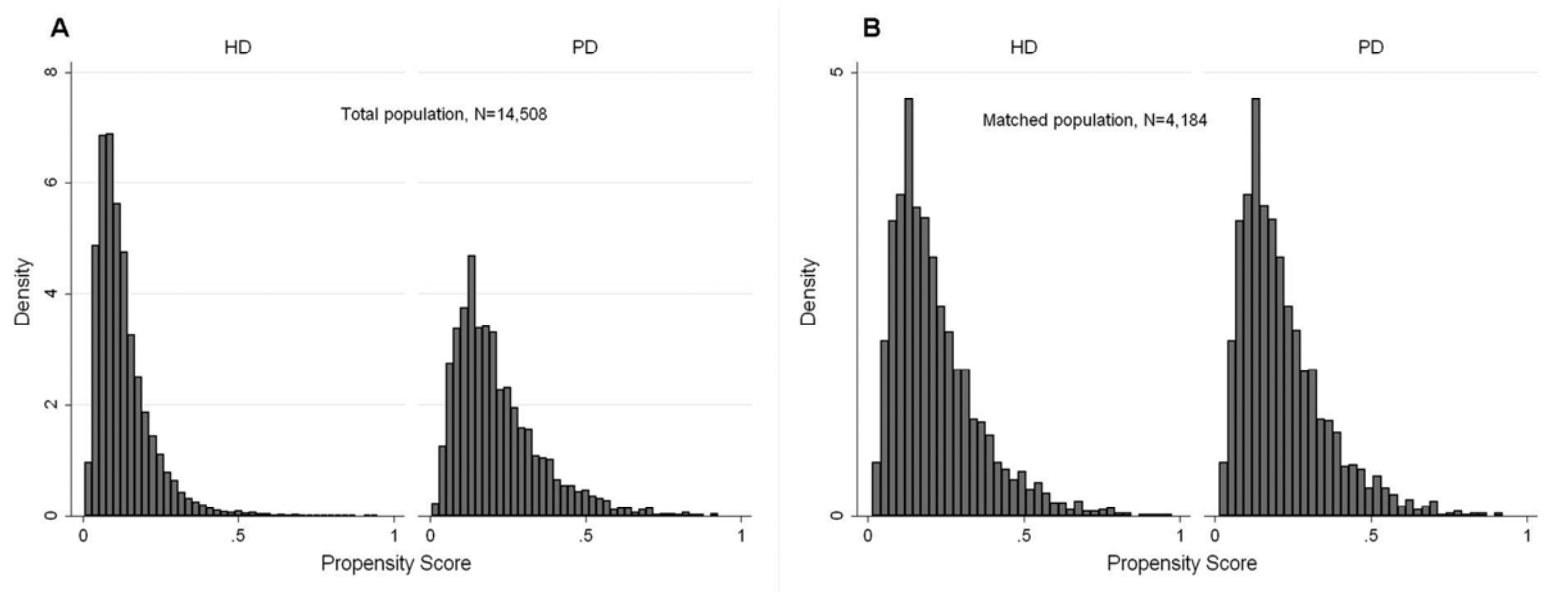
Figure S1:

Figure S2:

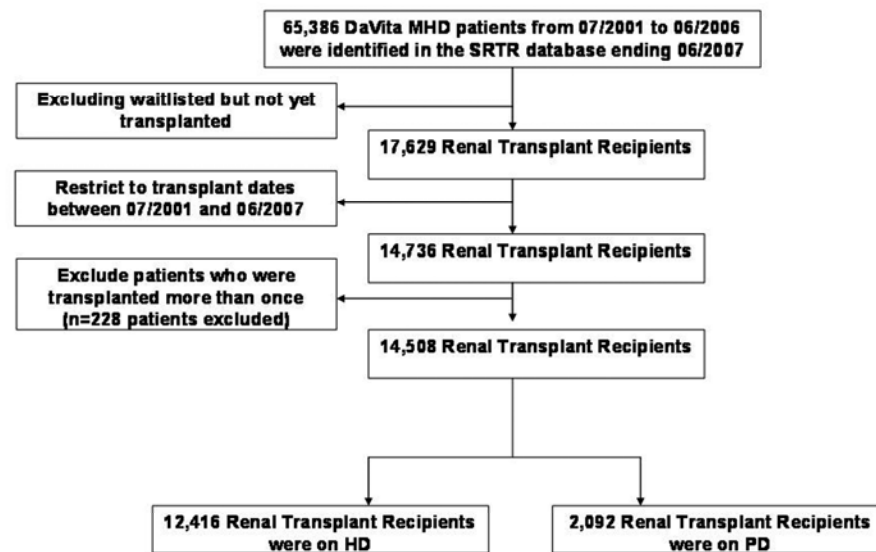


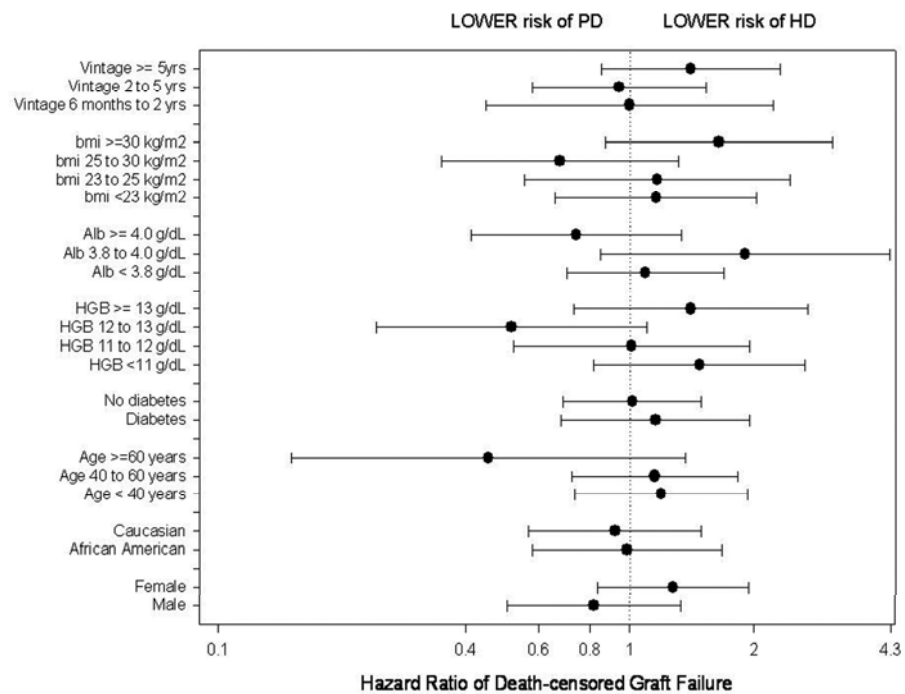
Figure S3:

Figure S4

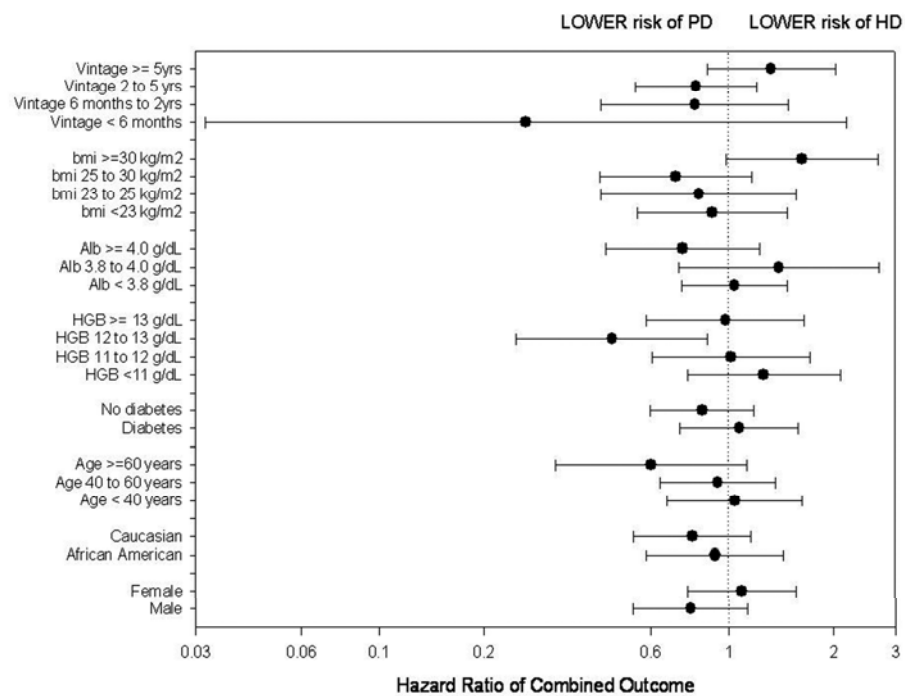


Figure S5

