

Supplementary data

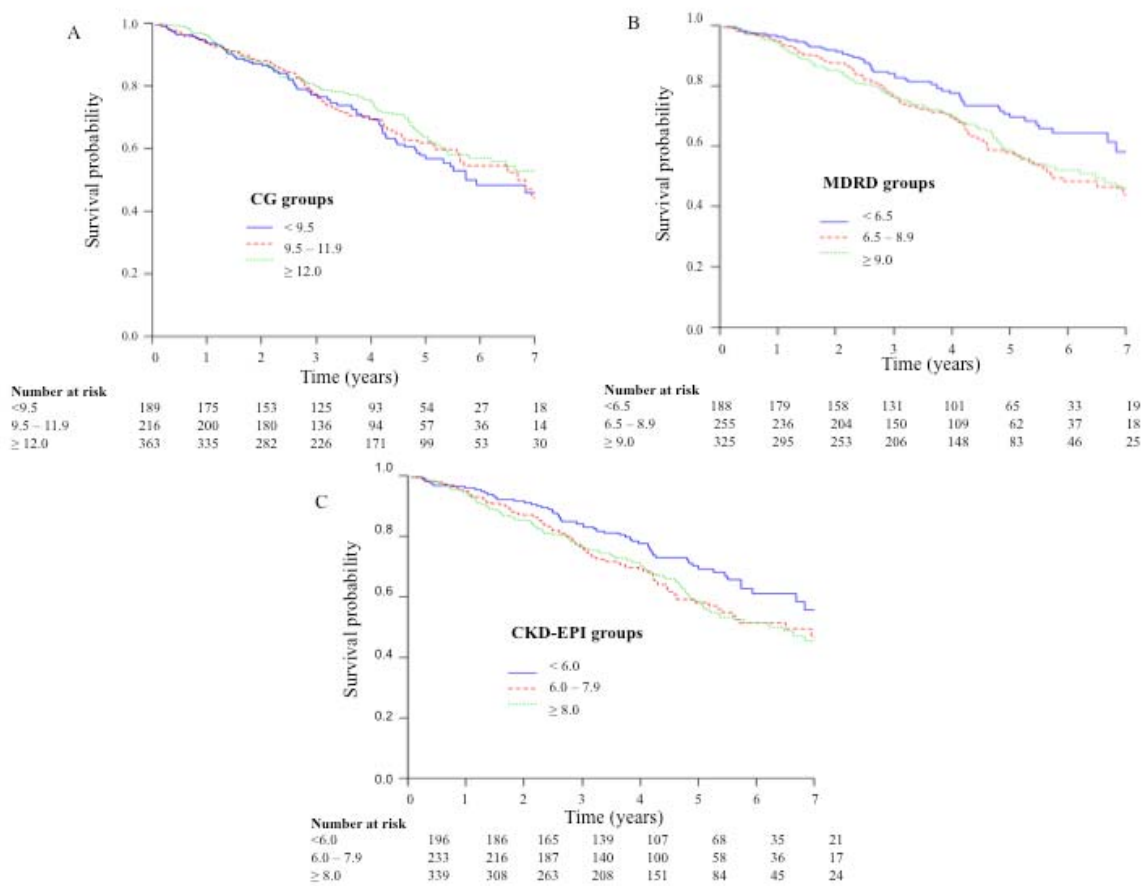
Supplementary table 1. Baseline characteristics of the IDEAL trial participants divided in tertiles of GFR at initiation, using mean urinary urea and creatinine clearance

Characteristics	Mean urinary urea and creatinine clearance (ml/min)			P-value
	<5.9	5.9-8.2	≥8.2	
N (301)	99	99	103	
Randomised Group (n,%)				
Early	41 (41.4%)	54 (54.6%)	80 (77.7%)	
Late	58 (58.6%)	45 (45.5%)	23 (22.3%)	
Female (n,%)	38 (38.4%)	41 (41.4%)	28 (27.2%)	0.08
Age (years)	60.2 (9.8)	58.6 (12.2)	63.9 (11.2)	<0.01
Duration first seen by nephrologist (months)*	63.2 (85.6)	80.2 (116.9)	62.4 (81.6)	0.34
Race (n,%)				
Caucasian	68 (68.7%)	72 (72.7%)	79 (76.7%)	0.44
Non-Caucasian	24 (24.2%)	22 (22.2%)	20 (19.4%)	
Comorbidities (n,%)				
Diabetes	49 (49.5%)	38 (38.4%)	43 (41.8%)	0.27
Congestive Cardiac Failure	10 (10.1%)	2 (2.0%)	4 (3.9%)	<0.05
Peripheral Vascular Disease	21 (21.2%)	15 (15.2%)	22 (21.4%)	0.46
Ischaemic Heart Disease	31 (31.3%)	26 (26.3%)	29 (28.2%)	0.73
Planned dialysis modality (n, %)				
Haemodialysis (HD)	43(43.4%)	35(35.4%)	41(39.8%)	0.51
Peritoneal dialysis (PD)	56(56.6%)	64(64.7%)	62(60.1%)	
Clinical parameters*				
BMI	31.1 (6.6)	28.8 (5.2)	27.1 (4.8)	<0.001
Systolic blood pressure	144 (23)	146 (20)	140 (22)	0.17
Diastolic blood pressure	78 (12)	81 (12)	76 (11)	<0.05

* Standard deviation unless otherwise specified

Only 301 participants had 24 hours urinary collection at the time of commencement of dialysis available for analysis.

Supplementary figure 1



Supplementary figure legend

Supplementary figure 1. Kaplan-Meier patient survival curve according to eGFR tertile groups at dialysis commencement in IDEAL trial participants “uncorrected” for body surface area (BSA). The differences among the groups when using the CG formula (A) were not statistically significant (log-rank test p value=0.46). The differences among the groups when using the MDRD (B) and CKD-EPI (C) formulae were statistically significant (Both log-rank test p value <0.05).