

Supplemental Material

Supplemental Table 1. Early graft function following deceased donor kidney transplantation from donors aged 60 years and older, stratified by donor type.

Supplemental Table 2. Recipient median (IQR) three-year eGFR of functioning single and dual kidney transplants, by donor age.

Supplemental Figure 1. Percentage of dual kidney transplants performed between 2005 and 2017, by UK adult kidney transplant centre, of the total number of deceased donor kidney transplants (single and dual kidney transplants) from donors aged 60 years and above. Values for each centre are depicted above the bar.

Supplemental Figure 2. Proportion of kidneys implanted as a single kidney transplant, dual kidney transplant or discarded during 2013 and 2017, by donor age.

Supplemental Figure 3. Five-year death-censored graft survival for single and dual kidney transplants from donors aged 70 years and over.

Supplemental Figure 4. Kaplan-Meier curve showing 5-year death-censored graft survival for single and dual kidney transplants from donors aged 60 years and above, stratified by US KDRI greater than and equal to 2.5.

Supplemental Figure 5. Kaplan-Meier curve showing 5-year death-censored graft survival for single and dual kidney transplants from donors aged 60 years and above, stratified by US KDRI greater than and equal to 2.75.

Supplemental Figure 6. Five-year death-censored graft survival for single and dual kidney transplants from donors aged 60 years and over, stratified further by recipient age.

Supplemental Figure 7. Numbers of individuals included in study.

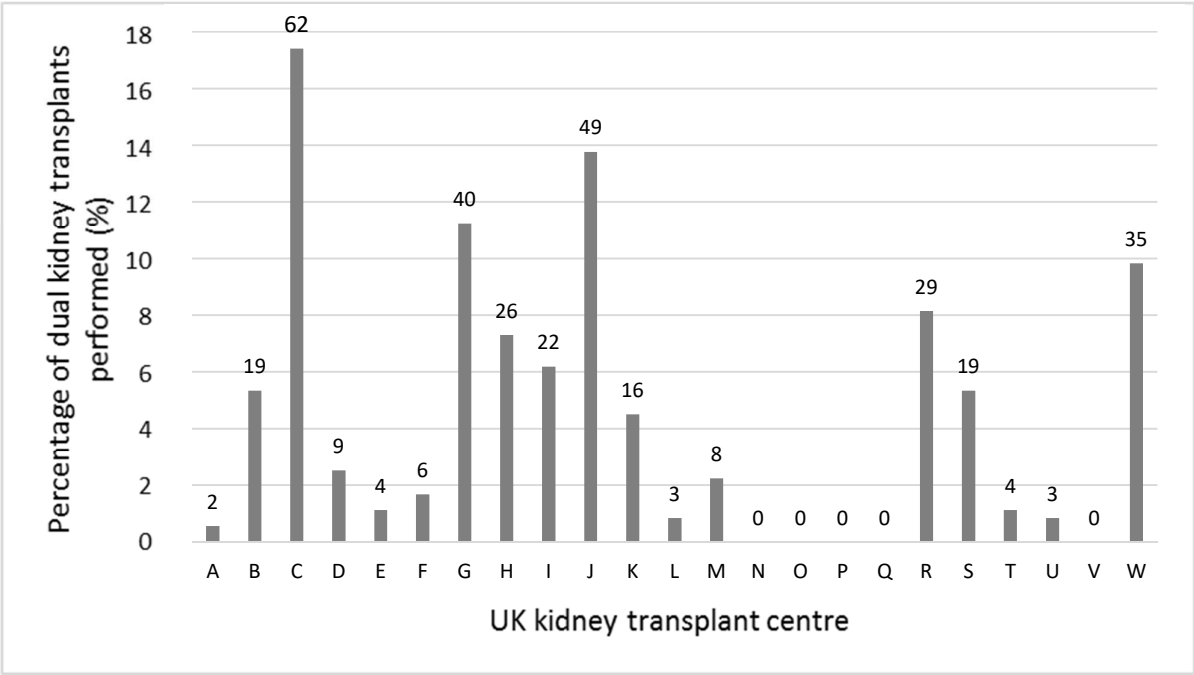
Supplemental Table 1. Early graft function following deceased donor kidney transplantation from donors aged 60 years and older, stratified by donor type.

	Single kidney transplant (n=5,032)	Dual kidney transplant (n=356)	p-value
DBD donor			
Immediate function	1,900 (66%)	50 (60%)	0.13
Primary non-function	90 (4%)	3 (4%)	0.83
Delayed graft function	654 (30%)	25 (30%)	0.14
Unknown/missing	226 (7%)	6 (7%)	
DCD donor			
Immediate function	1102 (51%)	156 (57%)	0.12
Primary non-function	81 (4%)	6 (2%)	0.17
Delayed graft function	805 (37%)	96 (35%)	0.31
Unknown/missing	174 (8%)	14 (5%)	

Supplemental Table 2. Recipient median (IQR) three-year eGFR of functioning single and dual kidney transplants, by donor age.

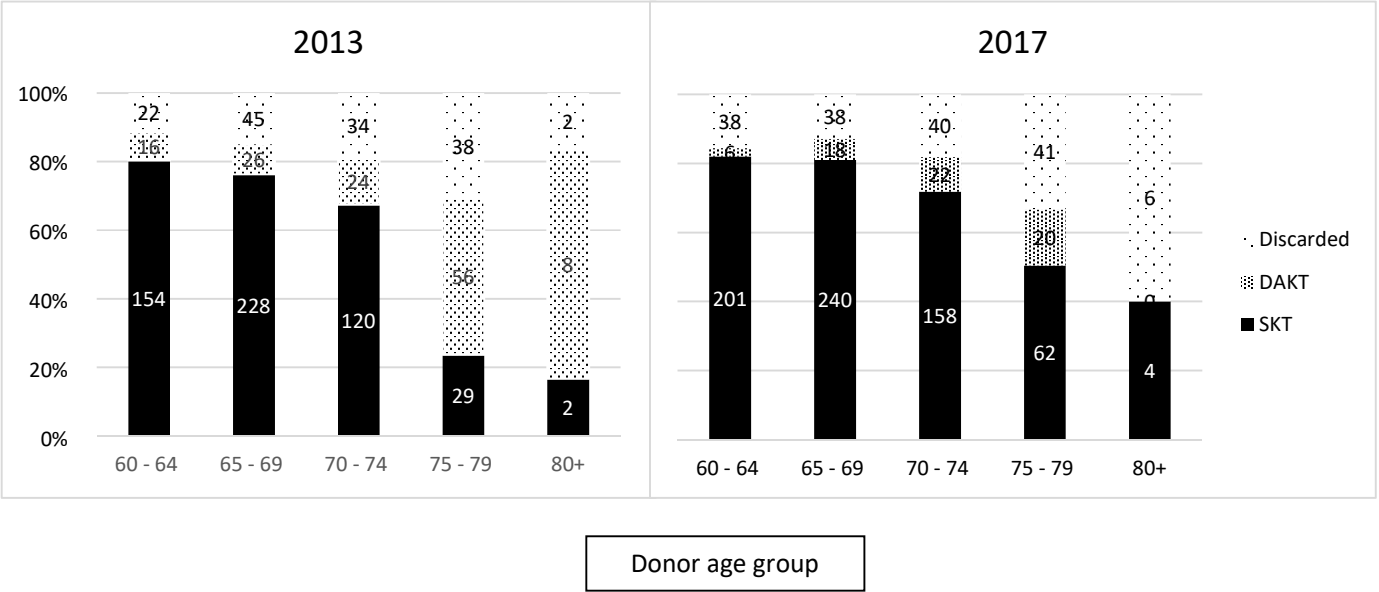
	Single kidney transplant (n=5,032)		Dual kidney transplant (n=356)		
Donor age (years)	Three-year eGFR (mL/min/1.73m ²)	Frequency (%)	Three-year eGFR (mL/min/1.73m ²)	Frequency (%)	p value
60 - 64	42 (32 – 52)	1,158 (23)	44 (39 – 50)	25 (7)	0.3
65 - 69	39 (29 – 50)	954 (19)	44 (33 – 55)	35 (10)	0.09
70 - 74	37 (28 – 47)	438 (9)	46 (34 – 61)	52 (15)	0.0005
75 – 79	34 (26 – 45)	170 (3)	45 (36 – 62)	70 (20)	<.0001
80+	30 (21 – 44)	10 (0)	45 (36 – 62)	14 (4)	0.2
Failed		598 (12)		39 (11)	
Missing		624 (12)		48 (13)	
Did not reach follow-up or died		1,080 (21)		73 (21)	

Supplemental Figure 1. Percentage of dual kidney transplants performed between 2005 and 2017, by UK adult kidney transplant centre, of the total number of deceased donor kidney transplants (single and dual kidney transplants) from donors aged 60 years and above. Actual number of dual transplants performed by each centre are depicted above the bar.

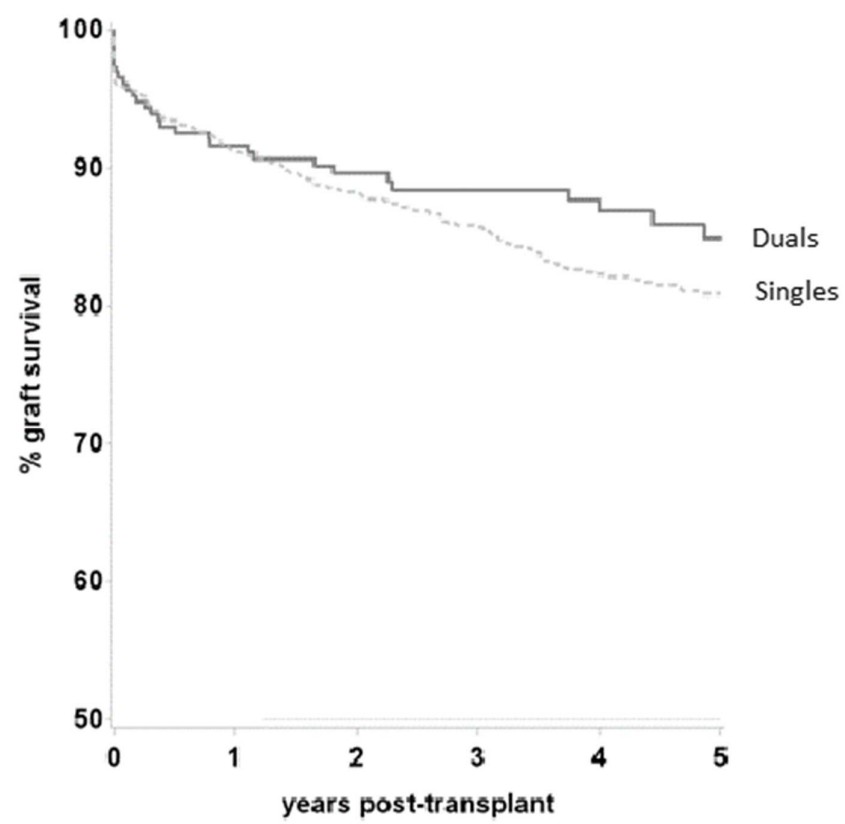


Supplemental Figure 2. Proportion of kidneys implanted as a single kidney transplant, dual kidney transplant or discarded during 2013 and 2017, by donor age.

(Absolute number of kidneys depicted on graph)



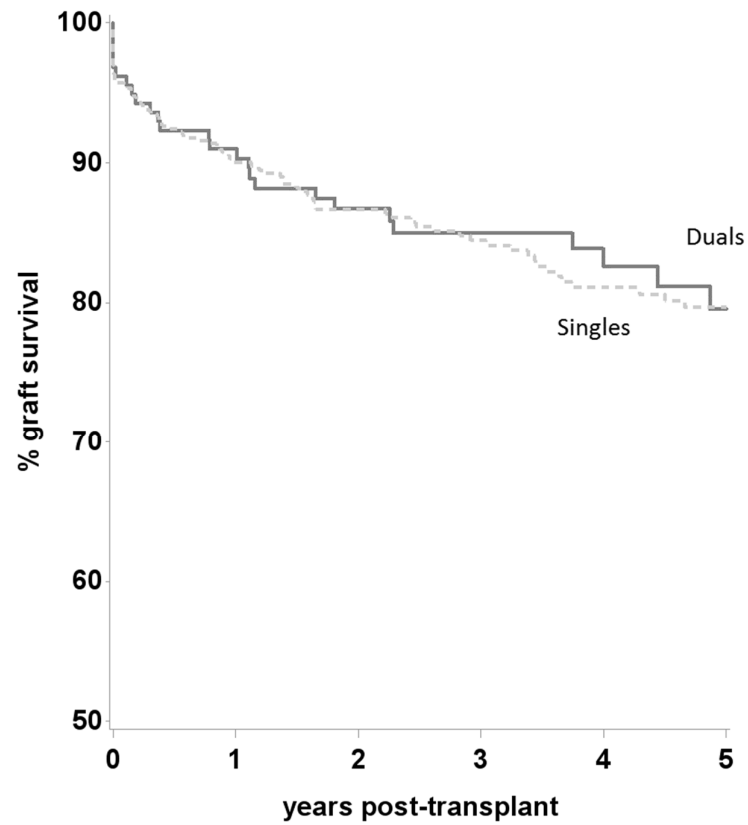
Supplemental Figure 3. Five-year death-censored graft survival for single and dual kidney transplants from donors aged 70 years and over.



p=0.25

Transplant type	n	5-yr graft survival (%)
Single kidney transplant donors ≥ 70	1271	81 (78-83)
Dual kidney transplant donors ≥ 70	233	85 (79-90)

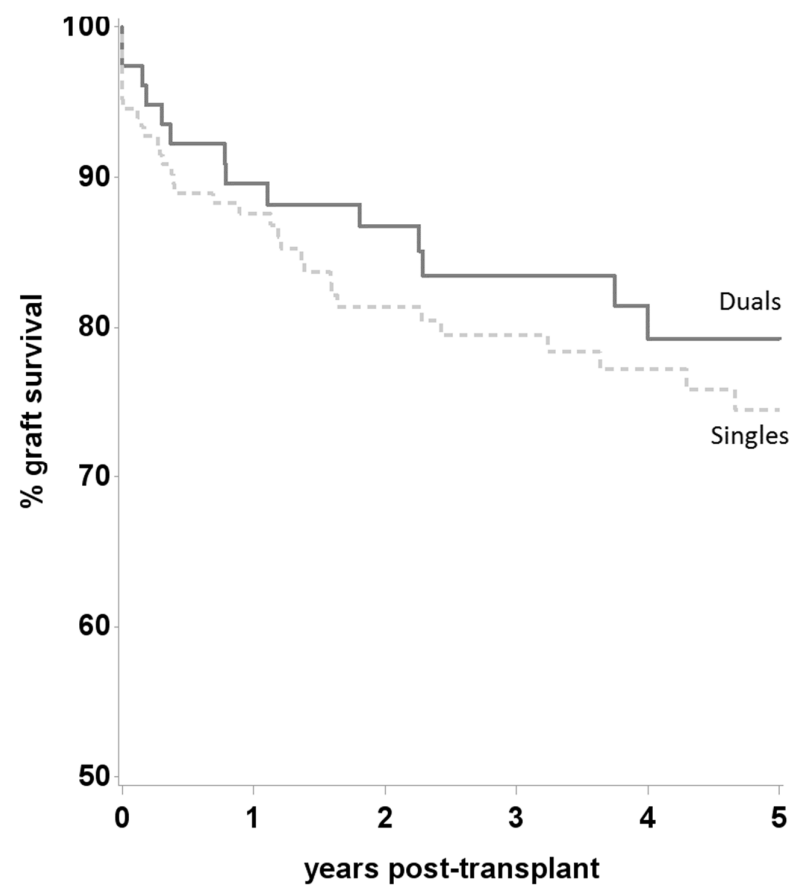
Supplemental Figure 4. Kaplan-Meier curve showing 5-year death-censored graft survival for single and dual kidney transplants from donors aged 60 years and above, stratified by US KDRI greater than and equal to 2.5.



p= 0.9

Transplant type	n	5-yr graft survival, % (95% CI)
Single kidney transplants KDRI \geq 2.5	495	80 (75-83)
Dual kidney transplants KDRI \geq 2.5	158	80 (70-86)

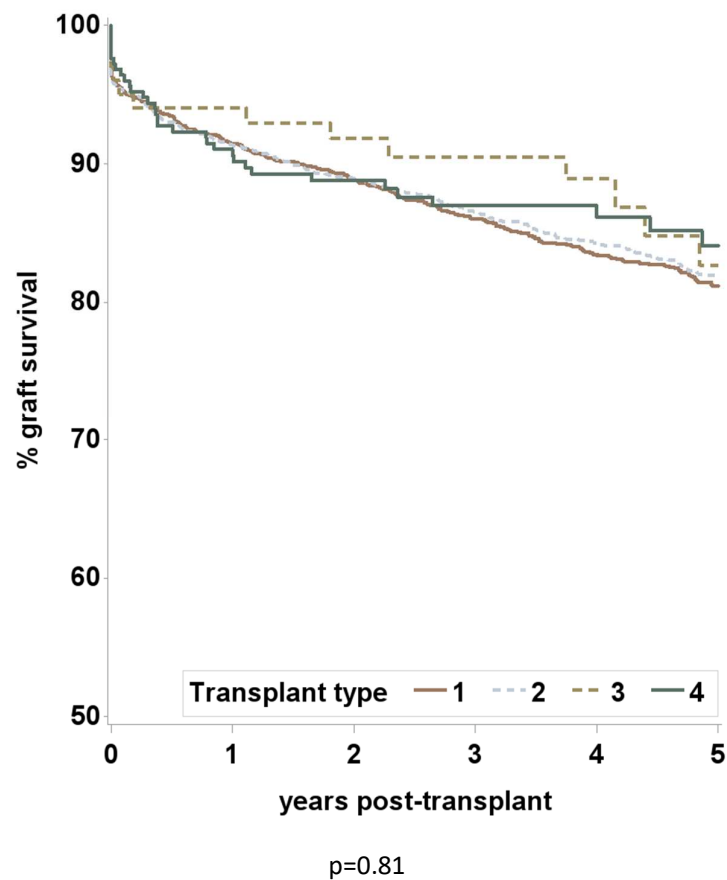
Supplemental Figure 5. Kaplan-Meier curve showing 5-year death-censored graft survival for single and dual kidney transplants from donors aged 60 years and above, stratified by US KDRI greater than and equal to 2.75.



p= 0.4

Transplant type	n	5-yr graft survival, % (95% CI)
Single kidney transplants USKDRI \geq 2.75	166	75 (66-81)
Dual kidney transplants USKDRI \geq 2.75	78	79 (67-87)

Supplemental Figure 6. Five-year death-censored graft survival for single and dual kidney transplants from donors aged 60 years and over, stratified further by recipient age.



Transplant type	n	5-yr graft survival, % (95% CI)
1 – Single kidney transplant recipients aged < 69 years	2248	81 (79-83)
2 – Single kidney transplant recipients aged ≥70 years	2761	85 (80-94)
3 – Dual kidney transplant recipients aged < 69 years	101	82 (71-90)
4 – Dual kidney transplant recipients aged ≥70 years	252	84 (78-89)

Supplemental Figure 7. Numbers of individuals included in study

