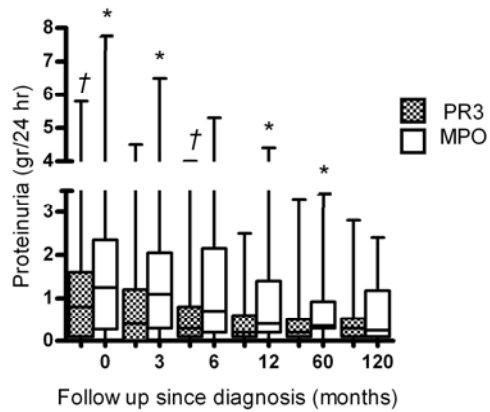


1 Supplemental Figures

2 Supplemental Figure 1: Differences in development of proteinuria between PR3-AAV and

3 MPO-AAV patients during longterm follow up.



4

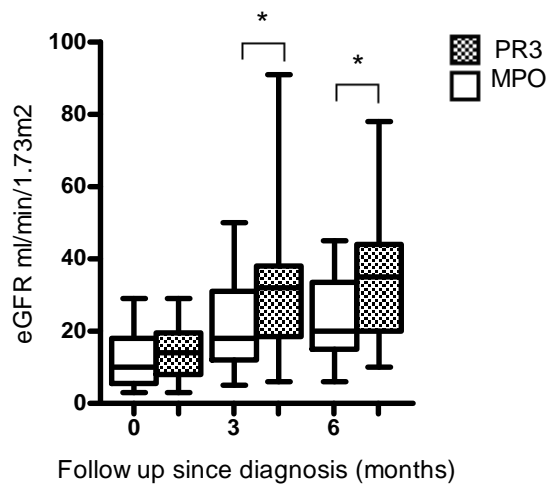
5

6 Supplemental Figure 2: course in eGFR in first six months after treatment of patients with

7 PR3- and MPO-AAV with renal involvement at diagnosis.

8

9

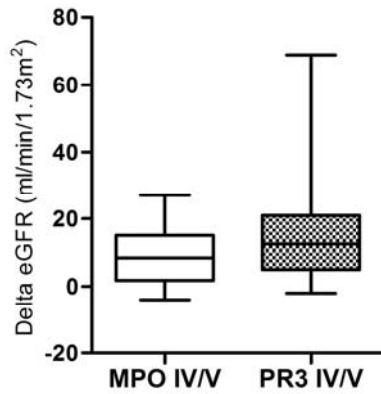


10

11

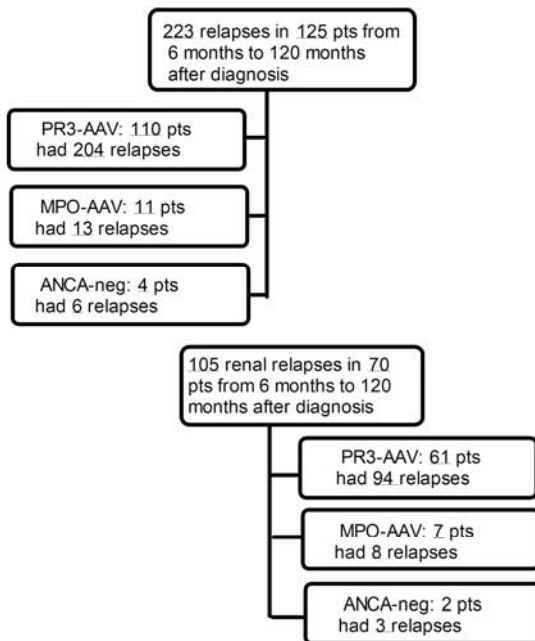
12

- 1 Supplemental Figure 3 Delta eGFR (ml/min/1.73m²) during first six months of follow up:
- 2 difference between MPO and PR3 for CKD stage IV and V.



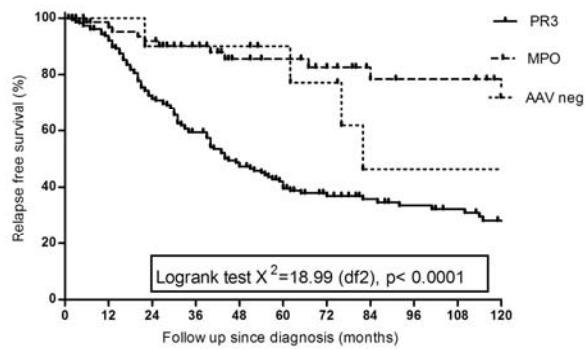
- 3
- 4
- 5

- 6 Supplemental Figure 4: number and division of relapses.



- 7
- 8
- 9
- 10

1 Supplemental Figure 5: Relapse free survival according to ANCA specificity

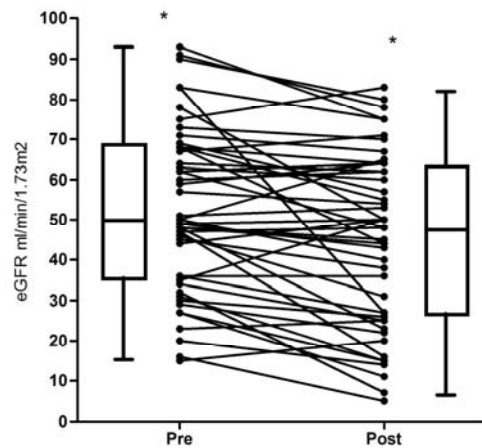


2

3	No at risk	0	6	12	60	96	120
4	PR3	138	123	114	36	20	13
5	MPO	65	56	53	31	18	15
6	ANCA neg	48	37	34	16	8	3

7

8 Supplemental Figure 6: Delta eGFR per patient per renal relapse



9

10

11

12

13

1 Supplemental Figure 7: Delta eGFR (ml/min/1.73m²) during longterm follow up: difference
2 between renal relapse versus no renal relapse.

